

VIRDEN ROSELEA UNIT No. 1
PROGRESS REPORT
January 1 to December 31, 2011

Enerplus Corporation
Manitoba Team
February 2012

Table of Contents

Table of Contents.....	2
List of Tables and Figures.....	2
Introduction.....	3
Discussion.....	3

List of Tables and Figures

Figure 1	Virden Roselea Unit No. 1 Map
Figure 2	Pattern Map
Table 1	Well Servicing Report
Table 2	2011 Pressure Surveys
Table 3	Waterflood Patterns and Corresponding Injectors
Table 4	Production, Injection Data and VRR for the Unit
	Production, Injection Data and VRR for Individual Patterns

Introduction

Viriden Roselea Unit No. 1 became effective July, 1965. This report summarizes the operations of the Unit for the period from January 1 to December 31, 2011 and discusses the performance of the waterflood to date. The area map of the Viriden Roselea Unit No. 1 is shown in Figure 1.

Discussion

Oil Production

In 2011, oil production rate for the Unit averaged 62.3 sm³/d with a WOR of 16.6 sm³/ sm³. A list of well servicing jobs in 2011 is shown in Table 1.

Total oil production in 2011 is 22,726 sm³. Cumulative oil since commencement of production is 2,898 sE3m³. Details of the production data are shown in Table 4 as well as graphically in the attached figures.

Water Injection

Average water injection rate for the Unit in 2011 was 1,067 sm³/d. There was one (1) well conversion in November 2011 : UWI 100/06-29-010-25W1/00. Injection will commence in 2012. In November 2010, 103/01-25-010-25W1 was converted to a water injection and commenced injection in March 2011.

Cumulative water injected to December 31, 2011 is 17,848 sE3m³. Details of the water injection data are also shown in Table 4 as well as the attached figures.

Voidage

The total project voidage during 2011 was 399 rE3m³, resulting in the voidage replacement ratio (VRR) of 0.98. It should be mentioned that there is an aquifer of moderate strength that is providing pressure support to the west side of the Unit, near Sections 23 and 26-010-26 W1M. The VRR calculation does not account for the water influx since its exact rate of production at the wells is difficult to quantify. All of the total water produced from Roselea Unit 1 is injected back into the reservoir and is included in the injection volume for voidage calculations.

Cumulative total voidage from commencement of production to December 31, 2011 is 18,836 rE3m³ and the cumulative VRR is 0.95. The oil formation volume factor used in the pattern voidage calculations is 1.0685 rm³/stm³. It should be noted that this “oil formation factor” is taken from 2011 reservoir fluid PVT study on a recombined oil sample obtained from the well 00/10-25-010-26W1. Detailed voidage calculations are shown in Table 4.

Reservoir Pressure

In 2011, reservoir pressure was recorded in 20 wells. All 20 pressure tests were AWS (Acoustic Well Sounder) measurements.

A summary of the pressure data is given in Table 2.

Recovery

Based on the current estimated OOIP of 11,447 E3m³, recovery in the Unit to year-end 2011 is 25.3 %

Waterflood Patterns

The Virden Roselea Unit No. 1 waterflood was originally developed mainly as inverted 9-spot patterns, which are still considered to be the waterflood patterns over a large area in the Unit. However, with subsequent horizontal well (production) drilling in some parts of the reservoir and some injection conversions added, some of the patterns' shapes are other than inverted 9-spot. The pattern map that is the basis for the VRR calculations is shown in Figure 2.

A list of waterflood patterns and corresponding injectors is given in Table 3. Table 4 provides detailed production, injection, pressure and voidage for each pattern.

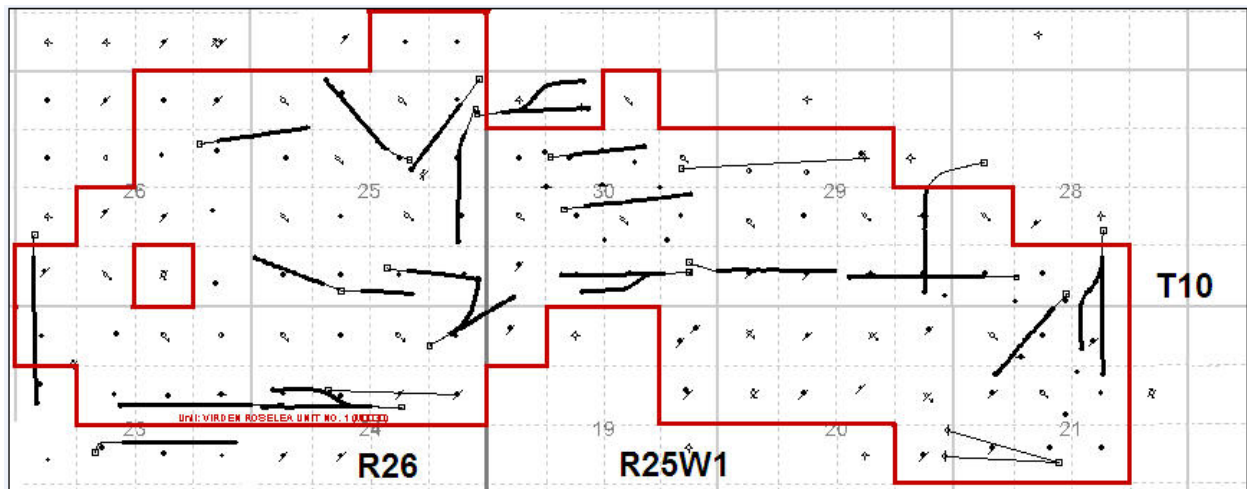


Figure 1: Virden Roselea Unit No. 1 Map

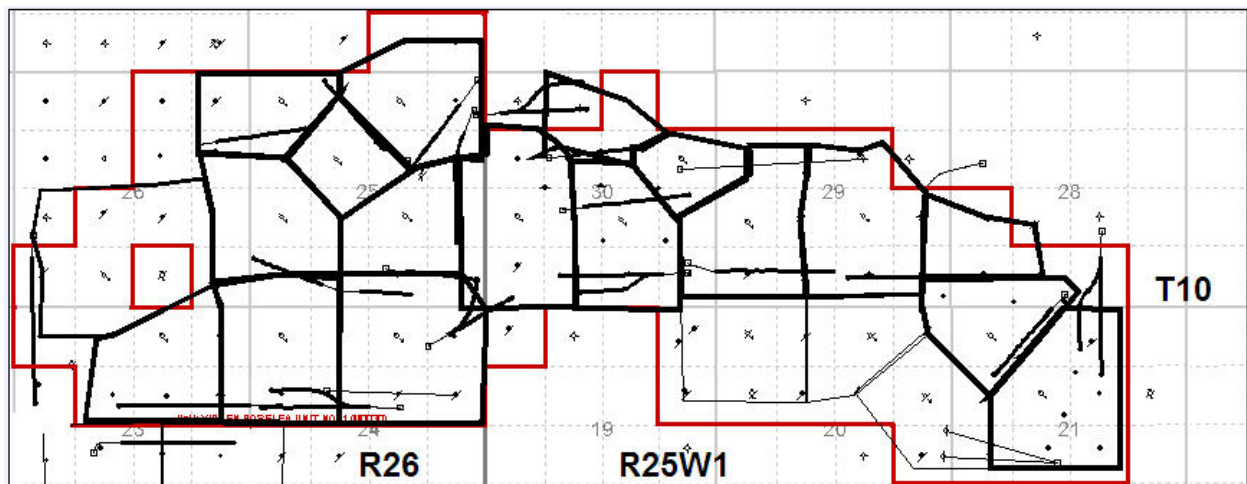


Figure 2: Pattern Map

Table 1: Well Servicing Report

UWI	Start Date	Type	Objective
102/01-29-010-25W1	3-Jan-11	Workover	MaxPerf
100/13-05-011-25W1	11-Jan-11	Maintenance	Upsize to a 2.75" tubing barrel pump
100/01-29-010-25W1	10-Mar-11	Temporary Suspension	Pull equipment, run a bridge plug
100/07-29-010-25W1	12-Mar-11	Temporary Suspension	Run tubing plug to suspend
100/05-29-010-25W1	14-Mar-11	Temporary Suspension	Run tubing plug to suspend
100/10-26-010-26W1	25-Mar-11	Workover	Isolate production with a plug (water shut off)
100/08-29-010-25W1	11-Dec-11	Abandonment	Abandon formation, cut and cap.
100/12-29-010-25W1	24-Jan-11	Abandonment	Abandon formation, cut and cap.
102/11-23-010-26W1	5-May-11	Maintenance	Change out pump
104/10-30-010-25W1	9-Jun-11	Maintenance	Replace pump
102/01-25-010-26W1	5-Jul-11	Suspension	Run a permanent bridge plug
100/02-25-010-26W1	6-Jul-11	Maintenance	Failed pump.
100/08-23-010-26W1	13-Jun-11	Abandonment	Abandon formation, cut and cap.
102/03-29-010-25W1	24-Sep-11	Workover	Run scab liner inside 4.5" liner
100/08-30-010-25W1	27-Sep-11	Maintenance	Corrosion Inhibitor squeeze (1.6 m3 oil+208L CR09961, displ with 8.0 m3 water)
102/01-29-010-25W1	11-Oct-11	Workover	Lateral acid job
100/05-29-010-25W1	3-Nov-11	Maintenance	Reactivate Production
100/06-29-010-25W1	18-Nov-11	Workover	Injector Conversion

Table 2: 2011 Pressure Surveys

UWI	Test Date	Test Type	Shut-In Since	BH Pressure (kPaa)
100/07-21-010-25W1/00	May-11	AWS	Mar-11	7225
100/10-21-010-25W1/00	May-11	AWS	Mar-11	6825
1C0/10-21-010-25W1/00	May-11	AWS	Mar-11	7044
102/10-21-010-25W1/00	May-11	AWS	Mar-11	7257
1A0/11-21-010-25W1/00	May-11	AWS	Mar-11	6703
102/12-21-010-25W1/00	May-11	AWS	Mar-11	7212
100/14-21-010-25W1/00	May-11	AWS	Apr-07	5851
100/03-28-010-25W1/00	May-11	AWS	Mar-11	7256
102/03-28-010-25W1/00	May-11	AWS	Mar-11	6940
103/03-28-010-25W1/00	Jun-11	AWS	Mar-11	6933
100/04-28-010-25W1/00	Jun-11	AWS	Jul-10	7251
102/04-28-010-25W1/00	May-11	AWS	Mar-11	7294
102/01-29-010-25W1/00	Jun-11	AWS	Mar-11	7823
100/06-25-010-26W1/00	May-11	AWS	Aug-04	10690
100/08-26-010-26W1/00	May-11	AWS	Jan-08	6645
00/01-29-010-25W1/0	Sep-11	AWS	Mar-11	4587
02/01-29-010-25W1/0	Sep-11	AWS	Mar-11	6397
00/03-28-010-25W1/0	Sep-11	AWS	Mar-11	6971
02/12-21-010-25W1/0	Sep-11	AWS	Mar-11	7139
02/03-28-010-25W1/0	Sep-11	AWS	Mar-11	7004
02/04-28-010-25W1/0	Sep-11	AWS	Mar-11	7342
02/10-21-010-25W1/0	Sep-11	AWS	Mar-11	5629
A0/11-21-010-25W1/0	Sep-11	AWS	Mar-11	6751
00/10-21-010-25W1/0	Sep-11	AWS	Mar-11	6940
C0/10-21-010-25w1/0	Sep-11	AWS	Mar-11	7102
00/07-21-010-25W1/0	Sep-11	AWS	Mar-11	7226
03/03-28-010-25W1/0	Sep-11	AWS	Mar-11	6873
00/04-28-010-25W1/0	Sep-11	AWS	Mar-11	7146
02/08-20-010-25W1/0	Sep-11	AWS	Mar-11	5250
00/06-21-010-25W1/0	Sep-11	AWS	Mar-11	6817
A0/11-21-010-25W1/0	Sep-11	AWS	Mar-11	6752

Average Reservoir Pressure in 2011 ---->

6,931

Table 3: Waterflood Patterns and Corresponding Injectors

Pattern	Well
PAT 03-26	100/03-26-010-26W1/0
PAT 05-25	100/05-25-010-26W1/0
PAT 05-28	100/05-28-010-25W1/0
PAT 05-29	100/05-29-010-25W1/0
PAT 05-30	100/05-30-010-25W1/0
PAT 07-25	100/07-25-010-26W1/0
PAT 07-29	100/07-29-010-25W1/0
PAT 07-30	100/07-30-010-25W1/0
PAT 11-21	100/11-21-010-25W1/0
PAT 11-25	100/11-25-010-26W1/0
PAT 13-21	100/13-21-010-26W1/0
PAT 13-24	100/13-24-010-26W1/0
PAT 15-23	100/15-23-010-26W1/0
PAT 15-24	100/15-24-010-26W1/0 , 103/01-25-010-26W1/0
PAT 15-25	100/15-25-010-26W1/0
PAT 09-30	100/09-30-010-26W1/0
PAT 13-25	100/13-25-010-26W1/0
PAT 15-30	100/15-30-010-25W1/0

Table 4
Virden Roselea Unit #1
Total For Unit

Date	Monthly Oil Prod sm3	Oil Rate (CD) sm3/d	Monthly Water Prod sm3	Water Rate (CD) sm3/d	Water Oil Ratio	Monthly Water Inj sm3	Water Inj Rate (CD) sm3/d	Water Inj Pressure kPa	Voidage Replacement Ratio	Cum Voidage Replacement Ratio
1/31/2011	2203.7	72.49	34828.8	1145.68	15.80	37077.0	1219.64	5218	1.00	0.95
2/28/2011	1316.0	43.29	26133.0	859.64	19.86	26133.0	859.64	5345	0.95	0.95
3/31/2011	2203.3	72.48	36149.5	1189.13	16.41	37917.0	1247.27	5488	0.98	0.95
4/30/2011	1628.3	53.56	38287.8	1259.47	23.51	39957.0	1314.38	5626	1.00	0.95
5/31/2011	1806.8	59.43	29967.7	985.78	16.59	31316.0	1030.13	5664	0.98	0.95
6/30/2011	1656.6	54.49	25235.4	830.11	15.23	26605.0	875.16	5733	0.99	0.95
7/31/2011	1763.1	58.00	25873.4	851.10	14.67	27047.1	889.71	5809	0.97	0.95
8/31/2011	1805.7	59.40	24189.8	795.72	13.40	25493.0	838.59	5785	0.98	0.95
9/30/2011	1802.9	59.31	26138.1	859.81	14.50	27561.0	906.61	5767	0.98	0.95
10/31/2011	2165.4	71.23	32020.7	1053.31	14.79	33607.0	1105.49	5797	0.98	0.95
11/30/2011	2155.6	70.91	32141.6	1057.29	14.91	39668.2	1304.88	5786	1.15	0.95
12/31/2011	2219.0	72.99	43558.0	1432.83	19.63	36995.0	1216.94	5893	0.81	0.95
Cumulative Oil Produced (E3m3)					2898.06					
Cumulative Water Produced (E3m3)					15741.51					
Cumulative Water Injected (E3m3)					17848.23					
Cumulative Voidage Replacement Ratio					0.95					

Table 4
Viriden Roselea Unit #1
Pattern: 03-26

Date	Monthly Oil Prod M3	Oil Rate (CD) m3/d	Monthly Water Prod m3	Water Rate (CD) m3/d	Water Oil Ratio m3/m3	Monthly Water Inj m3	Water Inj Rate (CD) m3/d	Water Inj Pressure kPa	Voidage Replacement Ratio	Cum Voidage Replacement Ratio
1/31/2011	193.7	6.25	3170.6	102.28	16.37	1269.0	40.94	3829	0.38	0.37
2/28/2011	144.2	5.15	2517.5	89.91	17.45	1110.0	39.64	4700	0.42	0.37
3/31/2011	227.0	7.32	3582.9	115.58	15.79	2131.0	68.74	4748	0.56	0.37
4/30/2011	172.7	5.76	3378.4	112.61	19.56	1231.0	41.03	5200	0.35	0.37
5/31/2011	195.2	6.30	2823.2	91.07	14.47	1205.0	38.87	5213	0.40	0.37
6/30/2011	191.9	6.39	2820.3	94.01	14.70	1175.0	39.17	5400	0.39	0.37
7/31/2011	216.8	6.99	2864.0	92.39	13.21	2242.1	72.33	5406	0.72	0.37
8/31/2011	213.6	6.89	2452.8	79.12	11.48	1520.0	49.03	5600	0.57	0.37
9/30/2011	218.8	7.29	2792.9	93.10	12.76	1409.0	46.97	5600	0.47	0.37
10/31/2011	218.7	7.05	3088.4	99.62	14.12	1238.0	39.94	5490	0.37	0.37
11/30/2011	212.4	7.08	3358.3	111.94	15.81	1237.0	41.23	5480	0.35	0.37
12/31/2011	178.1	5.74	2681.4	86.50	15.06	1365.0	44.03	5477	0.48	0.37
Cumulative Oil Produced (E3m3)					107.73					
Cumulative Water Produced (E3m3)					1211.78					
Cumulative Water Injected (E3m3)					489.60					
Cumulative Voidage Replacement Ratio					0.37					

Table 4
Virden Roselea Unit #1
Pattern: 05-25

Date	Monthly Oil Prod M3	Oil Rate (CD) m3/d	Monthly Water Prod m3	Water Rate (CD) m3/d	Water Oil Ratio m3/m3	Monthly Water Inj m3	Water Inj Rate (CD) m3/d	Water Inj Pressure kPa	Voidage Replacement Ratio	Cum Voidage Replacement Ratio
1/31/2011	27.2	0.88	778.0	25.10	28.63	2509.0	80.94	5994	3.11	0.64
2/28/2011	30.3	1.08	1387.5	49.55	45.74	1399.0	49.96	5807	0.99	0.64
3/31/2011	57.5	1.85	2448.3	78.98	42.61	2318.0	74.77	6019	0.92	0.64
4/30/2011	41.7	1.39	2248.4	74.95	53.92	2861.0	95.37	6200	1.25	0.64
5/31/2011	35.3	1.14	1087.5	35.08	30.77	961.0	31.00	6200	0.85	0.64
6/30/2011	35.0	1.17	1465.7	48.86	41.86	1453.0	48.43	6213	0.97	0.64
7/31/2011	52.3	1.69	1844.8	59.51	35.29	2074.0	66.90	6600	1.09	0.64
8/31/2011	55.1	1.78	1602.9	51.71	29.11	1080.0	34.84	6561	0.65	0.65
9/30/2011	42.7	1.42	1626.2	54.21	38.12	2248.0	74.93	6020	1.35	0.65
10/31/2011	44.6	1.44	1943.3	62.69	43.59	2421.0	78.10	6439	1.22	0.65
11/30/2011	53.0	1.77	2231.5	74.38	42.09	2425.0	80.83	6307	1.06	0.65
12/31/2011	54.8	1.77	2208.3	71.23	40.30	2305.0	74.35	6400	1.02	0.65

Cumulative Oil Produced (E3m3)	104.47
Cumulative Water Produced (E3m3)	1423.41
Cumulative Water Injected (E3m3)	993.44
Cumulative Voidage Replacement Ratio	0.65

Table 4
Viriden Roselea Unit #1
Pattern: 05-28

Date	Monthly Oil Prod M3	Oil Rate (CD) m3/d	Monthly Water Prod m3	Water Rate (CD) m3/d	Water Oil Ratio m3/m3	Monthly Water Inj m3	Water Inj Rate (CD) m3/d	Water Inj Pressure kPa	Voidage Replacement Ratio	Cum Voidage Replacement Ratio
1/31/2011	76.2	2.46	789.1	25.45	10.36	1780.0	57.42	2800	2.05	2.42
2/28/2011	76.0	2.71	964.2	34.44	12.69	1360.0	48.57	2836	1.30	2.41
3/31/2011	28.5	0.92	0.0	0.00	0.00	722.0	23.29	3800	23.75	2.42
4/30/2011								3800		2.42
5/31/2011								3800		2.42
6/30/2011								3800		2.42
7/31/2011								3800		2.42
8/31/2011								3800		2.42
9/30/2011	7.2	0.24	60.6	2.02	8.42	97.0	3.23	3853	1.42	2.42
10/31/2011	70.4	2.27	738.1	23.81	10.48	2773.0	89.45	5032	3.41	2.42
11/30/2011	57.1	1.90	1174.5	39.15	20.59	2634.0	87.80	5027	2.13	2.42
12/31/2011	57.5	1.85	1127.1	36.36	19.60	3067.0	98.94	5400	2.58	2.42
Cumulative Oil Produced (E3m3)					61.10					
Cumulative Water Produced (E3m3)					298.87					
Cumulative Water Injected (E3m3)					880.22					
Cumulative Voidage Replacement Ratio					2.45					

Table 4
Virden Roselea Unit #1
Pattern: 05-29

Date	Monthly Oil Prod M3	Oil Rate (CD) m3/d	Monthly Water Prod m3	Water Rate (CD) m3/d	Water Oil Ratio m3/m3	Monthly Water Inj m3	Water Inj Rate (CD) m3/d	Water Inj Pressure kPa	Voidage Replacement Ratio	Cum Voidage Replacement Ratio
1/31/2011	10.6	0.34	301.2	9.72	28.42			3200		1.88
2/28/2011	7.0	0.25	161.1	5.75	23.03			3200		1.88
3/31/2011	11.4	0.37	236.9	7.64	20.76	400.0	12.90	3200	1.61	1.88
4/30/2011	8.7	0.29	223.7	7.46	25.80			3200		1.88
5/31/2011	9.5	0.31	180.7	5.83	19.10			3200		1.87
6/30/2011	9.7	0.32	186.6	6.22	19.30			3200		1.87
7/31/2011	12.0	0.39	186.7	6.02	15.57			3200		1.87
8/31/2011	12.1	0.39	166.1	5.36	13.74			3200		1.87
9/30/2011	11.4	0.38	178.5	5.95	15.68			3200		1.87
10/31/2011	11.6	0.37	200.9	6.48	17.40			3200		1.87
11/30/2011	11.2	0.37	216.9	7.23	19.40	133.2	4.44	3200	0.58	1.87
12/31/2011	11.2	0.36	207.7	6.70	18.49	1987.0	64.10	3284	9.05	1.87
Cumulative Oil Produced (E3m3)					152.91					
Cumulative Water Produced (E3m3)					416.05					
Cumulative Water Injected (E3m3)					1085.61					
Cumulative Voidage Replacement Ratio					1.91					

Table 4
Virden Roselea Unit #1
Pattern: 05-30

Date	Monthly Oil Prod M3	Oil Rate (CD) m3/d	Monthly Water Prod m3	Water Rate (CD) m3/d	Water Oil Ratio m3/m3	Monthly Water Inj m3	Water Inj Rate (CD) m3/d	Water Inj Pressure kPa	Voidage Replacement Ratio	Cum Voidage Replacement Ratio
1/31/2011	72.1	2.32	2441.7	78.76	33.88	9800.0	316.13	6987	3.89	1.52
2/28/2011	43.6	1.56	1133.0	40.46	25.98	9400.0	335.71	6900	7.97	1.52
3/31/2011	90.7	2.93	2223.1	71.71	24.51	4682.0	151.03	6903	2.02	1.53
4/30/2011	65.6	2.19	2001.6	66.72	30.53	4682.0	156.07	7000	2.26	1.53
5/31/2011	86.4	2.79	1750.2	56.46	20.27	1800.0	58.06	7003	0.98	1.53
6/30/2011	86.4	2.88	1718.7	57.29	19.90	1940.0	64.67	7044	1.07	1.52
7/31/2011	95.4	3.08	1842.5	59.44	19.31	2348.0	75.74	7000	1.21	1.52
8/31/2011	106.8	3.45	1875.1	60.49	17.55	2288.0	73.81	6997	1.15	1.52
9/30/2011	102.0	3.40	1938.3	64.61	19.01	2154.0	71.80	6907	1.05	1.52
10/31/2011	105.7	3.41	2233.6	72.05	21.14	2114.0	68.19	6965	0.90	1.52
11/30/2011	109.4	3.65	2545.2	84.84	23.26	6500.0	216.67	6797	2.44	1.52
12/31/2011	111.1	3.58	2457.5	79.28	22.12	1690.0	54.52	6742	0.66	1.52
Cumulative Oil Produced (E3m3)					303.21					
Cumulative Water Produced (E3m3)					1324.49					
Cumulative Water Injected (E3m3)					2509.48					
Cumulative Voidage Replacement Ratio					1.54					

Table 4
Virden Roselea Unit #1
Pattern: 07-25

Date	Monthly Oil Prod M3	Oil Rate (CD) m3/d	Monthly Water Prod m3	Water Rate (CD) m3/d	Water Oil Ratio m3/m3	Monthly Water Inj m3	Water Inj Rate (CD) m3/d	Water Inj Pressure kPa	Voidage Replacement Ratio	Cum Voidage Replacement Ratio
1/31/2011	81.5	2.63	1944.7	62.73	23.87	2367.0	76.35	6206	1.17	1.00
2/28/2011	51.4	1.84	1185.4	42.34	23.04	747.0	26.68	6414	0.60	1.00
3/31/2011	111.9	3.61	2848.0	91.87	25.46	2597.0	83.77	6761	0.88	1.00
4/30/2011	82.2	2.74	2333.3	77.78	28.37	2993.0	99.77	6413	1.24	1.00
5/31/2011	94.7	3.05	1852.5	59.76	19.56	903.0	29.13	6800	0.46	1.00
6/30/2011	87.3	2.91	1744.1	58.14	19.97	2977.0	99.23	6800	1.62	1.00
7/31/2011	104.6	3.37	2206.3	71.17	21.09	1777.0	57.32	6800	0.77	1.00
8/31/2011	122.4	3.95	2304.2	74.33	18.82	2570.0	82.90	6826	1.06	1.00
9/30/2011	117.3	3.91	2365.1	78.84	20.16	3033.0	101.10	7200	1.22	1.00
10/31/2011	120.7	3.89	2643.8	85.29	21.90	2616.0	84.39	7126	0.94	1.00
11/30/2011	123.8	4.13	3095.5	103.18	25.00	3764.0	125.47	7040	1.17	1.00
12/31/2011	125.7	4.05	3001.2	96.81	23.88	1911.0	61.65	6987	0.61	1.00
Cumulative Oil Produced (E3m3)					214.67					
Cumulative Water Produced (E3m3)					998.77					
Cumulative Water Injected (E3m3)					1232.34					
Cumulative Voidage Replacement Ratio					1.02					

Table 4
Virden Roselea Unit #1
Pattern: 07-29

Date	Monthly Oil Prod M3	Oil Rate (CD) m3/d	Monthly Water Prod m3	Water Rate (CD) m3/d	Water Oil Ratio m3/m3	Monthly Water Inj m3	Water Inj Rate (CD) m3/d	Water Inj Pressure kPa	Voidage Replacement Ratio	Cum Voidage Replacement Ratio
1/31/2011	16.2	0.52	311.9	10.06	19.31			4000		1.13
2/28/2011	19.6	0.70	443.1	15.82	22.61			4000		1.13
3/31/2011	6.8	0.22				410.0	13.23	4000	56.43	1.13
4/30/2011								4000		1.13
5/31/2011								4000		1.13
6/30/2011								4000		1.13
7/31/2011								4000		1.13
8/31/2011								4000		1.13
9/30/2011	1.1	0.04	18.9	0.63	17.95			4000		1.13
10/31/2011	8.3	0.27	269.3	8.69	32.64			4000		1.13
11/30/2011	9.5	0.32	423.3	14.11	44.79	121.0	4.03	4000	0.28	1.12
12/31/2011	9.5	0.31	405.2	13.07	42.65	2300.0	74.19	4068	5.54	1.13
Cumulative Oil Produced (E3m3)					114.85					
Cumulative Water Produced (E3m3)					518.70					
Cumulative Water Injected (E3m3)					722.89					
Cumulative Voidage Replacement Ratio					1.14					

Table 4
Virden Roselea Unit #1
Pattern: 07-30

Date	Monthly Oil Prod M3	Oil Rate (CD) m3/d	Monthly Water Prod m3	Water Rate (CD) m3/d	Water Oil Ratio m3/m3	Monthly Water Inj m3	Water Inj Rate (CD) m3/d	Water Inj Pressure kPa	Voidage Replacement Ratio	Cum Voidage Replacement Ratio
1/31/2011	365.1	11.78	2658.1	85.75	7.28			7000	0.00	0.73
2/28/2011	241.2	8.62	1423.9	50.85	5.90	405.0	14.46	7000	0.24	0.73
3/31/2011	377.3	12.17	2043.3	65.91	5.42	1591.0	51.32	7000	0.65	0.73
4/30/2011	294.6	9.82	1910.5	63.68	6.48	1897.0	63.23	7000	0.85	0.73
5/31/2011	330.6	10.66	1599.2	51.59	4.84	3627.0	117.00	7006	1.86	0.73
6/30/2011	326.8	10.89	1629.4	54.31	4.99	1685.0	56.17	7087	0.85	0.73
7/31/2011	264.6	8.54	1898.9	61.25	7.18	1749.0	56.42	7000	0.80	0.73
8/31/2011	211.4	6.82	1758.8	56.73	8.32	1932.0	62.32	7000	0.97	0.73
9/30/2011	205.9	6.86	1946.4	64.88	9.45	1600.0	53.33	7000	0.74	0.73
10/31/2011	206.7	6.67	2162.7	69.77	10.46	2429.0	78.35	6965	1.02	0.73
11/30/2011	233.2	7.77	2290.6	76.35	9.82	2734.0	91.13	6780	1.08	0.74
12/31/2011	236.7	7.63	2212.4	71.37	9.35	1289.0	41.58	6477	0.52	0.74
Cumulative Oil Produced (E3m3)					320.31					
Cumulative Water Produced (E3m3)					657.77					
Cumulative Water Injected (E3m3)					734.64					
Cumulative Voidage Replacement Ratio					0.75					

Table 4
Virden Roselea Unit #1
Pattern: 11-21

Date	Monthly Oil Prod M3	Oil Rate (CD) m3/d	Monthly Water Prod m3	Water Rate (CD) m3/d	Water Oil Ratio m3/m3	Monthly Water Inj m3	Water Inj Rate (CD) m3/d	Water Inj Pressure kPa	Voidage Replacement Ratio	Cum Voidage Replacement Ratio
1/31/2011	129.4	4.17	1058.4	34.14	8.18	1056.0	34.06	2800	0.88	0.83
2/28/2011	123.3	4.41	1199.4	42.83	9.72	1077.0	38.46	2836	0.81	0.83
3/31/2011	50.5	1.63	0.0	0.00	0.00	476.0	15.35	3800	8.82	0.83
4/30/2011								3800		0.83
5/31/2011								3800		0.83
6/30/2011								3800		0.83
7/31/2011								3800		0.83
8/31/2011								3800		0.83
9/30/2011	13.4	0.45	96.2	3.21	7.20	85.0	2.83	3867	0.77	0.83
10/31/2011	164.8	5.31	1220.2	39.36	7.41	2098.0	67.68	5161	1.50	0.83
11/30/2011	125.4	4.18	1906.1	63.54	15.20	2710.0	90.33	5400	1.33	0.83
12/31/2011	117.5	3.79	1697.3	54.75	14.45	2781.0	89.71	5400	1.53	0.83
Cumulative Oil Produced (E3m3)					92.70					
Cumulative Water Produced (E3m3)					576.77					
Cumulative Water Injected (E3m3)					562.34					
Cumulative Voidage Replacement Ratio					0.84					

Table 4
Virden Roselea Unit #1
Pattern: 11-25

Date	Monthly Oil Prod M3	Oil Rate (CD) m3/d	Monthly Water Prod m3	Water Rate (CD) m3/d	Water Oil Ratio m3/m3	Monthly Water Inj m3	Water Inj Rate (CD) m3/d	Water Inj Pressure kPa	Voidage Replacement Ratio	Cum Voidage Replacement Ratio
1/31/2011	60.7	1.96	1620.1	52.26	26.70	1102.0	35.55	5800	0.65	1.25
2/28/2011	34.7	1.24	748.2	26.72	21.58	640.0	22.86	5807	0.82	1.25
3/31/2011	63.0	2.03	1243.1	40.10	19.72	1047.0	33.77	6000	0.80	1.25
4/30/2011	49.0	1.63	1209.4	40.31	24.67	711.0	23.70	6007	0.56	1.25
5/31/2011	54.1	1.74	978.5	31.56	18.10	1604.0	51.74	6200	1.55	1.25
6/30/2011	54.9	1.83	1010.7	33.69	18.42	1620.0	54.00	6213	1.52	1.25
7/31/2011	60.9	1.96	1001.8	32.32	16.46	1919.0	61.90	6600	1.80	1.25
8/31/2011	61.0	1.97	877.5	28.31	14.38	1084.0	34.97	6600	1.15	1.25
9/30/2011	59.8	1.99	965.6	32.19	16.15	1525.0	50.83	6607	1.48	1.25
10/31/2011	60.1	1.94	1075.3	34.69	17.88	1450.0	46.77	6587	1.27	1.25
11/30/2011	43.7	1.46	1120.2	37.34	25.64	1251.0	41.70	6507	1.07	1.25
12/31/2011	43.9	1.42	1072.3	34.59	24.44	1448.0	46.71	6600	1.29	1.25
Cumulative Oil Produced (E3m3)					89.87					
Cumulative Water Produced (E3m3)					302.01					
Cumulative Water Injected (E3m3)					498.58					
Cumulative Voidage Replacement Ratio					1.27					

Table 4
Virden Roselea Unit #1
Pattern: 13-21

Date	Monthly Oil Prod M3	Oil Rate (CD) m3/d	Monthly Water Prod m3	Water Rate (CD) m3/d	Water Oil Ratio m3/m3	Monthly Water Inj m3	Water Inj Rate (CD) m3/d	Water Inj Pressure kPa	Voidage Replacement Ratio	Cum Voidage Replacement Ratio
1/31/2011	69.9	2.25	782.9	25.25	11.20	364.0	11.74	2800	0.42	0.47
2/28/2011	65.7	2.35	854.9	30.53	13.02	862.0	30.79	2836	0.93	0.47
3/31/2011	25.5	0.82	0.0	0.00	0.00	449.0	14.48	3800	16.51	0.47
4/30/2011								3800		0.47
5/31/2011								3800		0.47
6/30/2011								3800		0.47
7/31/2011								3800		0.47
8/31/2011								3800		0.47
9/30/2011	7.2	0.24	68.5	2.28	9.51	80.0	2.67	3680	1.05	0.47
10/31/2011	84.3	2.72	752.1	24.26	8.92	1343.0	43.32	2168	1.60	0.47
11/30/2011	72.4	2.41	1052.5	35.08	14.54	1815.0	60.50	3533	1.61	0.47
12/31/2011	73.8	2.38	1019.9	32.90	13.82	2037.0	65.71	5400	1.85	0.47
Cumulative Oil Produced (E3m3)					141.78					
Cumulative Water Produced (E3m3)					853.12					
Cumulative Water Injected (E3m3)					474.87					
Cumulative Voidage Replacement Ratio					0.48					

Table 4
Virden Roselea Unit #1
Pattern: 13-24

Date	Monthly Oil Prod M3	Oil Rate (CD) m3/d	Monthly Water Prod m3	Water Rate (CD) m3/d	Water Oil Ratio m3/m3	Monthly Water Inj m3	Water Inj Rate (CD) m3/d	Water Inj Pressure kPa	Voidage Replacement Ratio	Cum Voidage Replacement Ratio
1/31/2011	63.5	2.05	1217.8	39.28	19.18	3688.0	118.97	5774	2.87	1.59
2/28/2011	43.6	1.56	887.5	31.69	20.36	611.0	21.82	5014	0.65	1.58
3/31/2011	74.4	2.40	1408.5	45.43	18.93	1134.0	36.58	5439	0.76	1.58
4/30/2011	54.5	1.82	1263.8	42.13	23.19	1857.0	61.90	5793	1.41	1.58
5/31/2011	64.8	2.09	1198.2	38.65	18.48	1113.0	35.90	5613	0.88	1.58
6/30/2011	53.4	1.78	888.7	29.62	16.64	1083.0	36.10	5807	1.15	1.58
7/31/2011	69.4	2.24	1021.9	32.96	14.74	1786.0	57.61	6000	1.63	1.58
8/31/2011	75.5	2.44	919.0	29.64	12.17	1077.0	34.74	6013	1.08	1.58
9/30/2011	70.1	2.34	899.0	29.97	12.83	2780.0	92.67	6200	2.86	1.58
10/31/2011	70.3	2.27	1001.0	32.29	14.23	2599.0	83.84	6090	2.42	1.58
11/30/2011	67.9	2.26	1080.9	36.03	15.91	2129.0	70.97	5947	1.85	1.58
12/31/2011	68.9	2.22	1057.2	34.10	15.34	1461.0	47.13	5974	1.29	1.58
Cumulative Oil Produced (E3m3)					102.50					
Cumulative Water Produced (E3m3)					680.12					
Cumulative Water Injected (E3m3)					1249.85					
Cumulative Voidage Replacement Ratio					1.60					

Table 4
Viriden Roselea Unit #1
Pattern: 15-23

Date	Monthly Oil Prod M3	Oil Rate (CD) m3/d	Monthly Water Prod m3	Water Rate (CD) m3/d	Water Oil Ratio m3/m3	Monthly Water Inj m3	Water Inj Rate (CD) m3/d	Water Inj Pressure kPa	Voidage Replacement Ratio	Cum Voidage Replacement Ratio
1/31/2011	131.0	4.23	1954.9	63.06	14.92	1353.0	43.65	5381	0.65	1.01
2/28/2011	93.8	3.35	1408.1	50.29	15.01	1391.0	49.68	4796	0.92	1.00
3/31/2011	152.6	4.92	2070.5	66.79	13.57	2656.0	85.68	4739	1.19	1.01
4/30/2011	94.2	3.14	1545.7	51.52	16.40	1015.0	33.83	5097	0.62	1.00
5/31/2011	114.5	3.69	1473.6	47.53	12.87	1193.0	38.48	5026	0.75	1.00
6/30/2011	119.7	3.99	1571.6	52.38	13.13	1287.0	42.90	5403	0.76	1.00
7/31/2011	114.9	3.71	1344.9	43.38	11.71	1588.0	51.23	5500	1.08	1.00
8/31/2011	137.5	4.43	1352.8	43.64	9.84	1748.0	56.39	5494	1.17	1.00
9/30/2011	142.6	4.75	1569.1	52.30	11.00	1302.0	43.40	5407	0.76	1.00
10/31/2011	126.5	4.08	1585.0	51.13	12.53	2458.0	79.29	5542	1.43	1.00
11/30/2011	138.4	4.61	1886.5	62.88	13.63	2499.0	83.30	5400	1.23	1.01
12/31/2011	138.9	4.48	1801.2	58.10	12.97	2670.0	86.13	5381	1.37	1.01
Cumulative Oil Produced (E3m3)					150.55					
Cumulative Water Produced (E3m3)					882.90					
Cumulative Water Injected (E3m3)					1049.19					
Cumulative Voidage Replacement Ratio					1.02					

Table 4
Virden Roselea Unit #1
Pattern: 15-24

Date	Monthly Oil Prod M3	Oil Rate (CD) m3/d	Monthly Water Prod m3	Water Rate (CD) m3/d	Water Oil Ratio m3/m3	Monthly Water Inj m3	Water Inj Rate (CD) m3/d	Water Inj Pressure kPa	Voidage Replacement Ratio	Cum Voidage Replacement Ratio
1/31/2011	91.0	2.93	1208.8	38.99	13.29	2335.0	75.32	5419	1.79	0.70
2/28/2011	61.1	2.18	1012.1	36.15	16.57	955.0	34.11	6504	0.89	0.71
3/31/2011	118.3	3.81	2889.3	93.20	24.43	8083.0	260.74	6600	2.68	0.71
4/30/2011	82.3	2.74	1794.4	59.81	21.81	12520.0	417.33	6599	6.65	0.72
5/31/2011	87.4	2.82	1172.0	37.81	13.41	8060.0	260.00	6560	6.37	0.72
6/30/2011	81.8	2.73	1111.7	37.06	13.59	4163.0	138.77	6707	3.47	0.73
7/31/2011	102.0	3.29	1931.1	62.29	18.93	1455.0	46.94	6894	0.71	0.73
8/31/2011	111.8	3.61	1948.4	62.85	17.43	2153.0	69.45	6707	1.04	0.73
9/30/2011	106.7	3.55	2006.0	66.87	18.81	2613.0	87.10	6800	1.23	0.73
10/31/2011	103.3	3.33	2017.7	65.09	19.54	2249.0	72.55	6774	1.06	0.73
11/30/2011	104.5	3.48	2610.2	87.01	24.97	2120.0	70.67	6800	0.78	0.73
12/31/2011	106.0	3.42	2552.4	82.34	24.08	1961.0	63.26	6787	0.74	0.73
Cumulative Oil Produced (E3m3)					172.79					
Cumulative Water Produced (E3m3)					1083.11					
Cumulative Water Injected (E3m3)					923.75					
Cumulative Voidage Replacement Ratio					0.74					

Table 4
Virden Roselea Unit #1
Pattern: 15-25

Date	Monthly Oil Prod M3	Oil Rate (CD) m3/d	Monthly Water Prod m3	Water Rate (CD) m3/d	Water Oil Ratio m3/m3	Monthly Water Inj m3	Water Inj Rate (CD) m3/d	Water Inj Pressure kPa	Voidage Replacement Ratio	Cum Voidage Replacement Ratio
1/31/2011	147.8	4.77	2901.8	93.61	19.63	1738.0	56.06	6581	0.57	0.92
2/28/2011	86.4	3.09	1358.6	48.52	15.73	1282.0	45.79	6275	0.88	0.92
3/31/2011	161.2	5.20	2338.9	75.45	14.51	2429.0	78.35	5619	0.97	0.92
4/30/2011	127.4	4.25	2337.4	77.91	18.34	2218.0	73.93	6200	0.90	0.92
5/31/2011	143.0	4.61	1950.2	62.91	13.64	3500.0	112.90	6187	1.66	0.93
6/30/2011	146.2	4.87	2031.7	67.72	13.90	1860.0	62.00	6027	0.85	0.93
7/31/2011	166.1	5.36	2103.6	67.86	12.67	1979.0	63.84	6200	0.87	0.93
8/31/2011	168.6	5.44	1872.1	60.39	11.11	2308.0	74.45	6194	1.13	0.93
9/30/2011	167.4	5.58	2055.6	68.52	12.28	2359.0	78.63	6013	1.06	0.93
10/31/2011	168.6	5.44	2287.6	73.79	13.56	2307.0	74.42	6019	0.94	0.93
11/30/2011	146.5	4.88	2344.3	78.14	16.00	2288.0	76.27	5993	0.92	0.93
12/31/2011	147.7	4.77	2254.9	72.74	15.26	2436.0	78.58	5884	1.01	0.93
Cumulative Oil Produced (E3m3)					137.69					
Cumulative Water Produced (E3m3)					697.53					
Cumulative Water Injected (E3m3)					782.81					
Cumulative Voidage Replacement Ratio					0.94					

Table 4
Virde Roselea Unit #1
Pattern: 09-30

Date	Monthly Oil Prod M3	Oil Rate (CD) m3/d	Monthly Water Prod m3	Water Rate (CD) m3/d	Water Oil Ratio m3/m3	Monthly Water Inj m3	Water Inj Rate (CD) m3/d	Water Inj Pressure kPa	Voidage Replacement Ratio	Cum Voidage Replacement Ratio
1/31/2011	35.6	1.15	478.4	15.43	13.45	2436.0	78.58	7148	4.72	0.78
2/28/2011	23.5	0.84	255.7	9.13	10.87	1086.0	38.79	6421	3.87	0.78
3/31/2011	38.4	1.24	376.2	12.14	9.81	1000.0	32.26	7006	2.40	0.78
4/30/2011	29.2	0.97	355.2	11.84	12.17	1010.0	33.67	7203	2.61	0.79
5/31/2011	30.3	0.98	264.4	8.53	8.73	2040.0	65.81	7319	6.87	0.79
6/30/2011	28.6	0.95	276.4	9.21	9.67	1922.0	64.07	7587	6.26	0.80
7/31/2011	43.1	1.39	267.9	8.64	6.22	1830.0	59.03	7497	5.83	0.80
8/31/2011	43.2	1.39	244.4	7.88	5.66	2032.0	65.55	7403	6.99	0.81
9/30/2011	40.4	1.35	263.2	8.77	6.51	1753.0	58.43	7500	5.72	0.81
10/31/2011	40.8	1.32	295.1	9.52	7.24	787.0	25.39	7503	2.32	0.81
11/30/2011	39.3	1.31	318.7	10.62	8.10	140.0	4.67	7260	0.39	0.81
12/31/2011	39.5	1.28	305.1	9.84	7.72	1010.0	32.58	6684	2.91	0.81
Cumulative Oil Produced (E3m3)					117.44					
Cumulative Water Produced (E3m3)					224.14					
Cumulative Water Injected (E3m3)					284.01					
Cumulative Voidage Replacement Ratio					0.83					

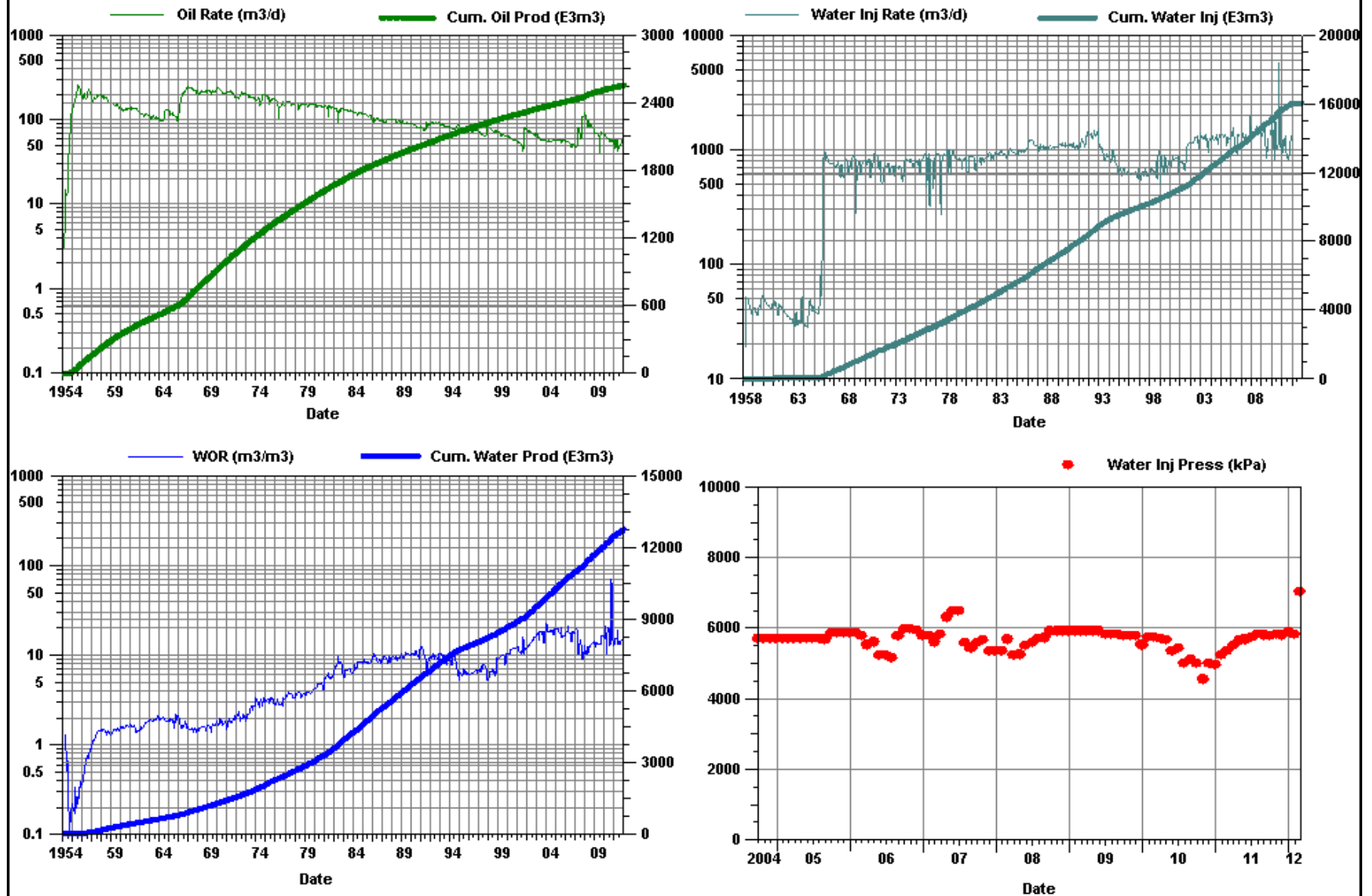
Table 4
Virden Roselea Unit #1
Pattern: 13-25

Date	Monthly Oil Prod M3	Oil Rate (CD) m3/d	Monthly Water Prod m3	Water Rate (CD) m3/d	Water Oil Ratio m3/m3	Monthly Water Inj m3	Water Inj Rate (CD) m3/d	Water Inj Pressure kPa	Voidage Replacement Ratio	Cum Voidage Replacement Ratio
1/31/2011	5.1	0.16	57.9	1.87	11.39	4193.0	135.26	5400	66.23	3.08
2/28/2011	15.0	0.53	865.3	30.91	57.88	2801.0	100.04	5379	3.18	3.08
3/31/2011	29.1	0.94	1577.0	50.87	54.20	4682.0	151.03	4813	2.91	3.08
4/30/2011	22.2	0.74	1489.1	49.64	67.15	5453.0	181.77	5193	3.61	3.08
5/31/2011	10.1	0.33	378.7	12.22	37.41	4203.0	135.58	5000	10.79	3.09
6/30/2011	21.9	0.73	1082.6	36.09	49.50	4145.0	138.17	5027	3.75	3.09
7/31/2011	28.7	0.93	1244.9	40.16	43.33	4958.0	159.94	5200	3.89	3.09
8/31/2011	26.9	0.87	992.2	32.01	36.94	4405.0	142.10	5194	4.32	3.10
9/30/2011	19.2	0.64	1063.0	35.43	55.51	3396.0	113.20	5013	3.13	3.10
10/31/2011	20.9	0.67	1316.2	42.46	62.98	3954.0	127.55	5155	2.95	3.10
11/30/2011	30.1	1.00	1554.4	51.81	51.59	4079.0	135.97	5213	2.57	3.09
12/31/2011	31.1	1.00	1537.6	49.60	49.39	4303.0	138.81	5384	2.74	3.09
Cumulative Oil Produced (E3m3)					61.49					
Cumulative Water Produced (E3m3)					351.32					
Cumulative Water Injected (E3m3)					1289.48					
Cumulative Voidage Replacement Ratio					3.12					

Table 4
Virden Roselea Unit #1
Pattern: 15-30

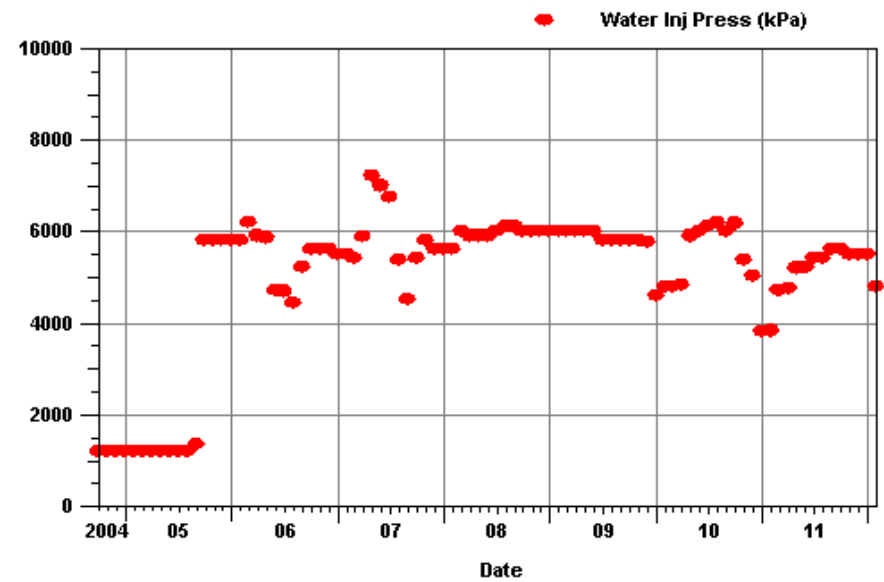
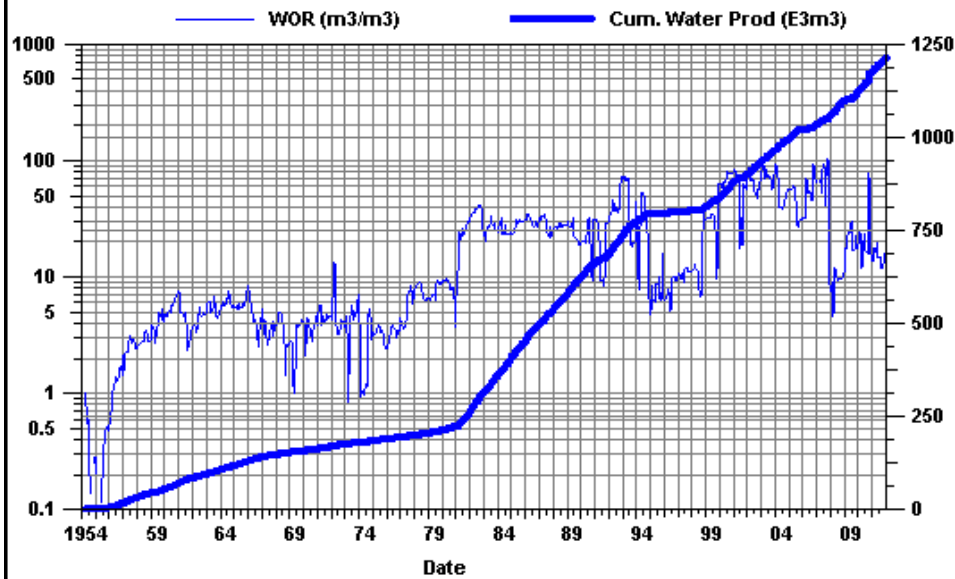
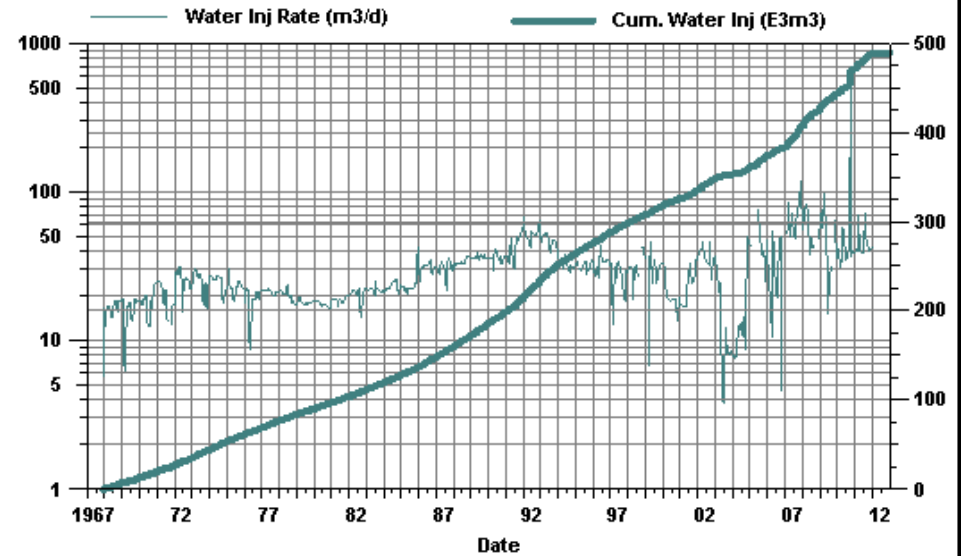
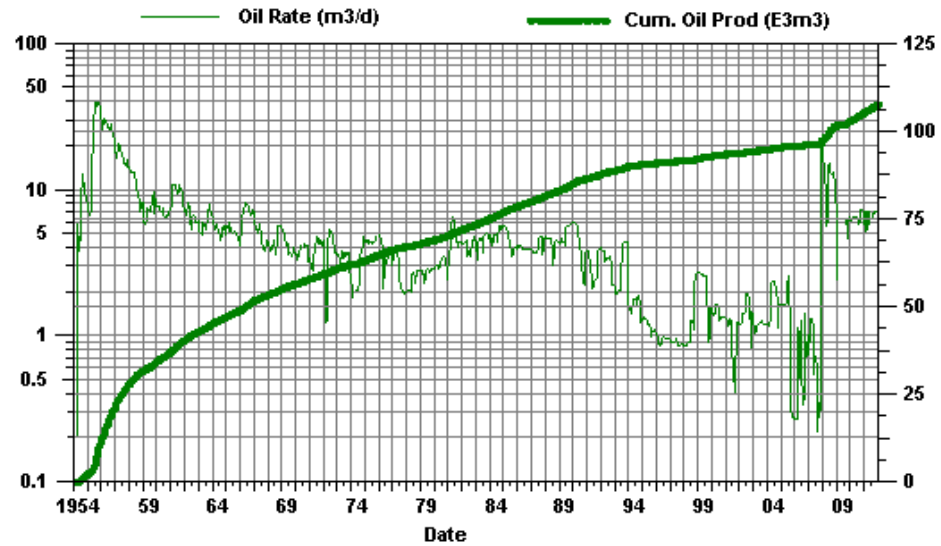
Date	Monthly Oil Prod M3	Oil Rate (CD) m3/d	Monthly Water Prod m3	Water Rate (CD) m3/d	Water Oil Ratio m3/m3	Monthly Water Inj m3	Water Inj Rate (CD) m3/d	Water Inj Pressure kPa	Voidage Replacement Ratio	Cum Voidage Replacement Ratio
1/31/2011	173.5	5.60	2848.1	91.87	16.41	1087.0	35.06	6800	0.36	0.76
2/28/2011	107.4	3.84	1405.4	50.19	13.08	1007.0	35.96	6771	0.66	0.76
3/31/2011	186.8	6.03	2243.6	72.37	12.01	1110.0	35.81	6013	0.45	0.76
4/30/2011	141.7	4.72	2109.4	70.31	14.89	1509.0	50.30	6420	0.67	0.76
5/31/2011	155.0	5.00	1707.8	55.09	11.01	1107.0	35.71	7000	0.59	0.76
6/30/2011	148.7	4.96	1704.7	56.82	11.46	1295.0	43.17	7000	0.70	0.76
7/31/2011	168.7	5.44	1560.2	50.33	9.25	1342.0	43.29	6994	0.77	0.76
8/31/2011	195.7	6.31	1659.7	53.54	8.48	1296.0	41.81	6800	0.69	0.76
9/30/2011	189.5	6.32	1814.0	60.47	9.57	1127.0	37.57	6760	0.56	0.75
10/31/2011	190.6	6.15	2021.9	65.22	10.61	771.0	24.87	5981	0.35	0.75
11/30/2011	182.1	6.07	2154.7	71.82	11.83	1089.0	36.30	5440	0.46	0.75
12/31/2011	184.9	5.96	2089.8	67.41	11.30	974.0	31.42	5997	0.43	0.75
Cumulative Oil Produced (E3m3)					114.74					
Cumulative Water Produced (E3m3)					269.90					
Cumulative Water Injected (E3m3)					293.73					
Cumulative Voidage Replacement Ratio					0.76					

Virden Roselea Unit #1 Total For Project



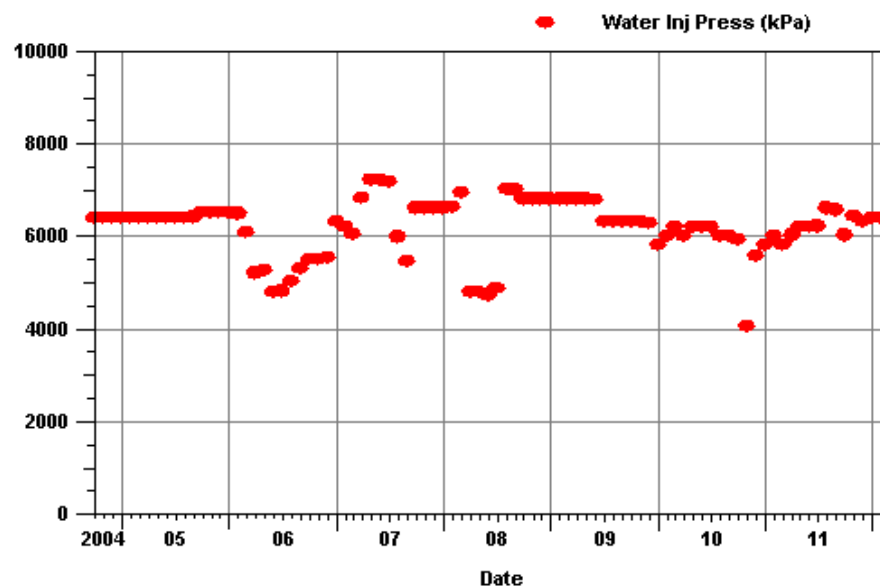
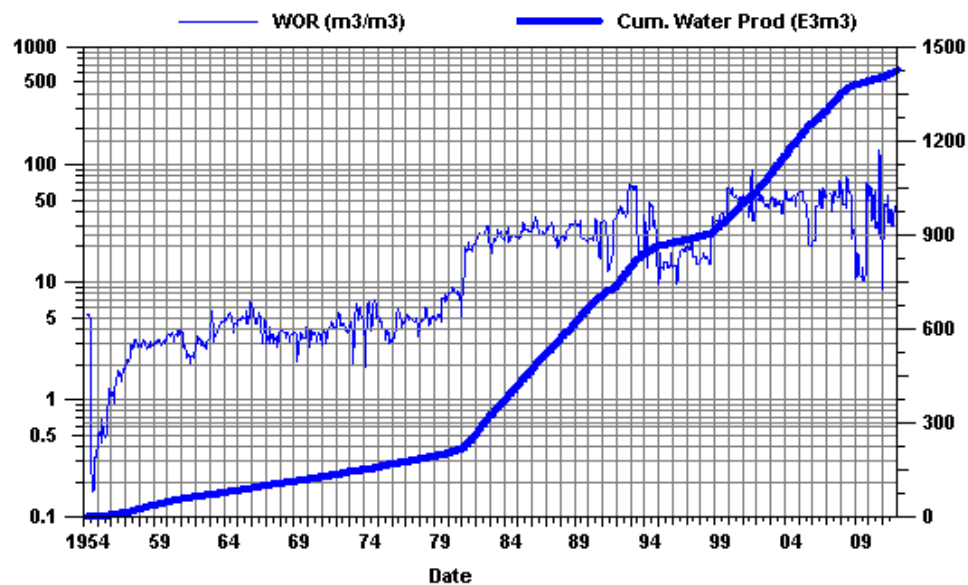
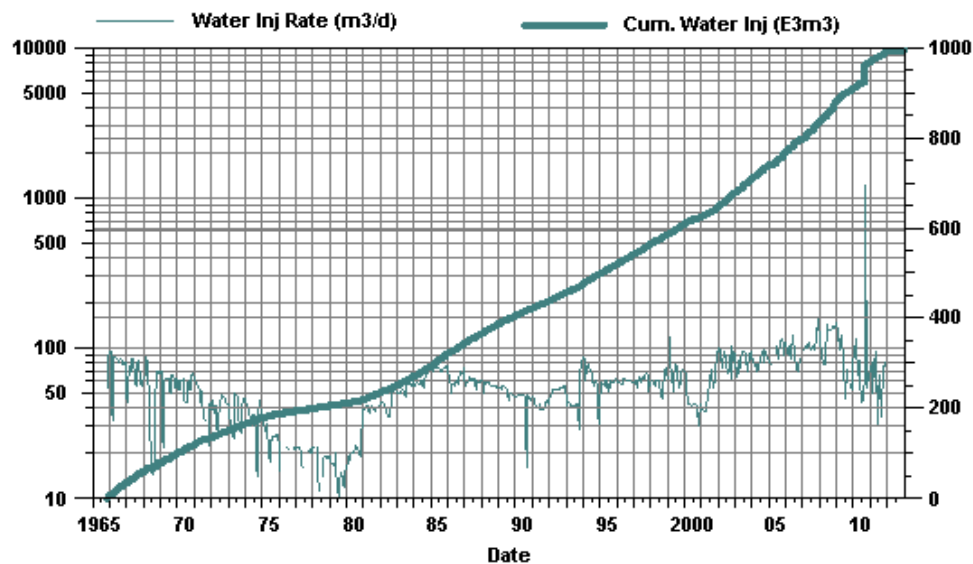
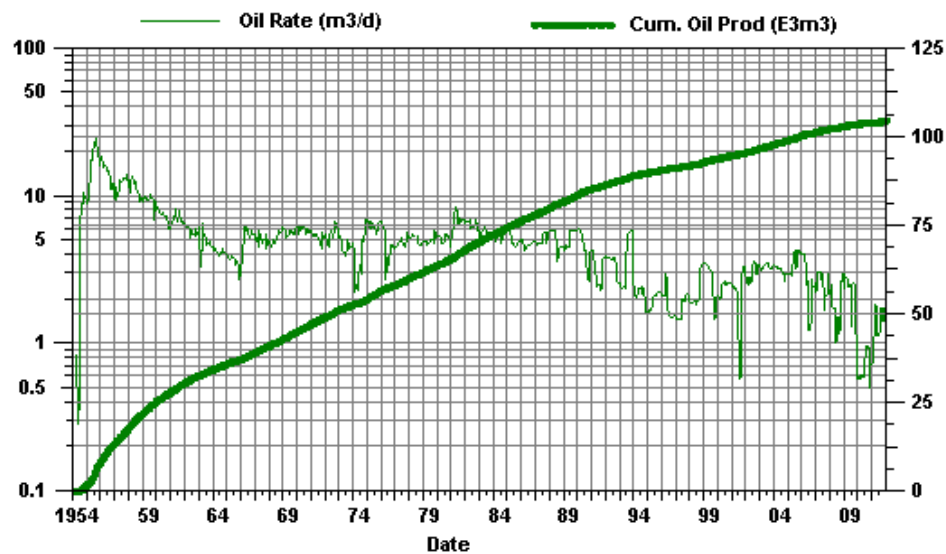
Virden Roselea Unit #1

PAT 03-26



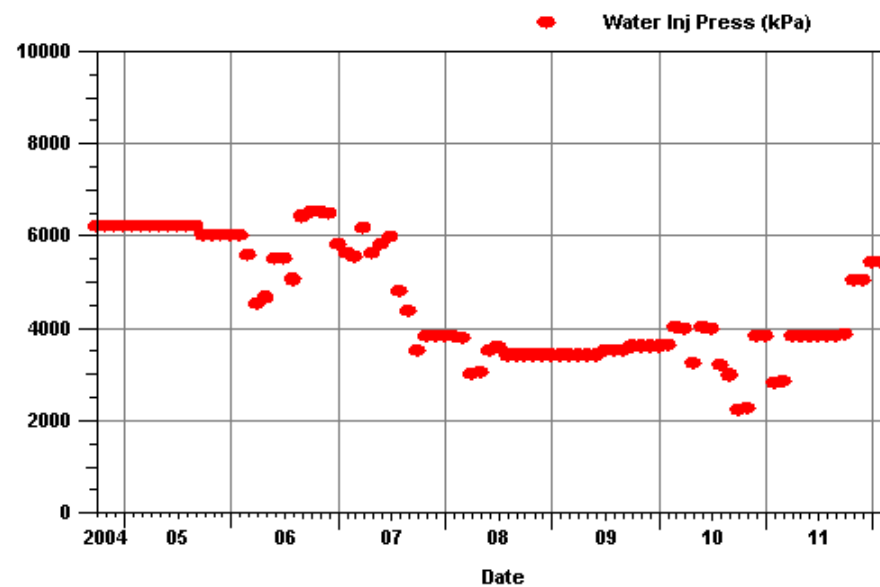
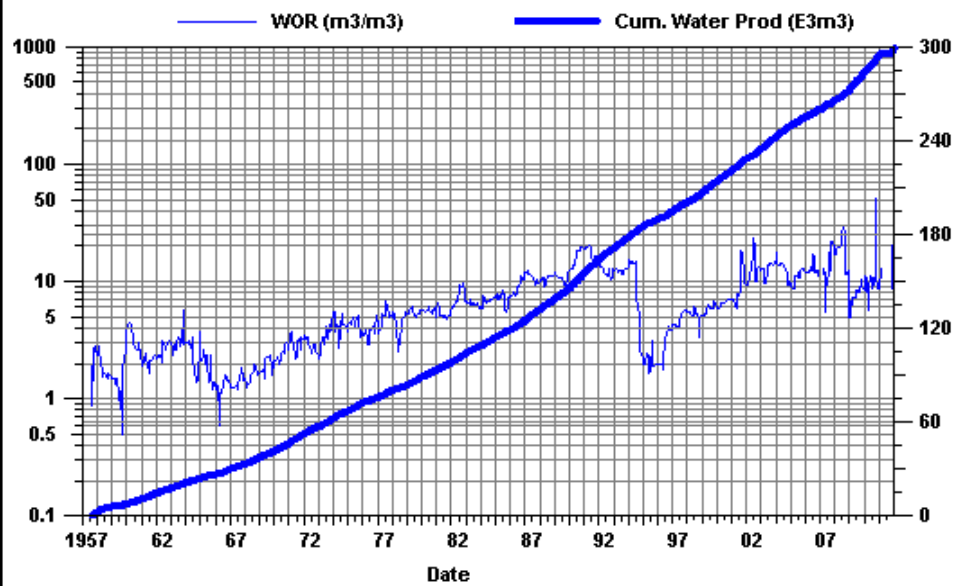
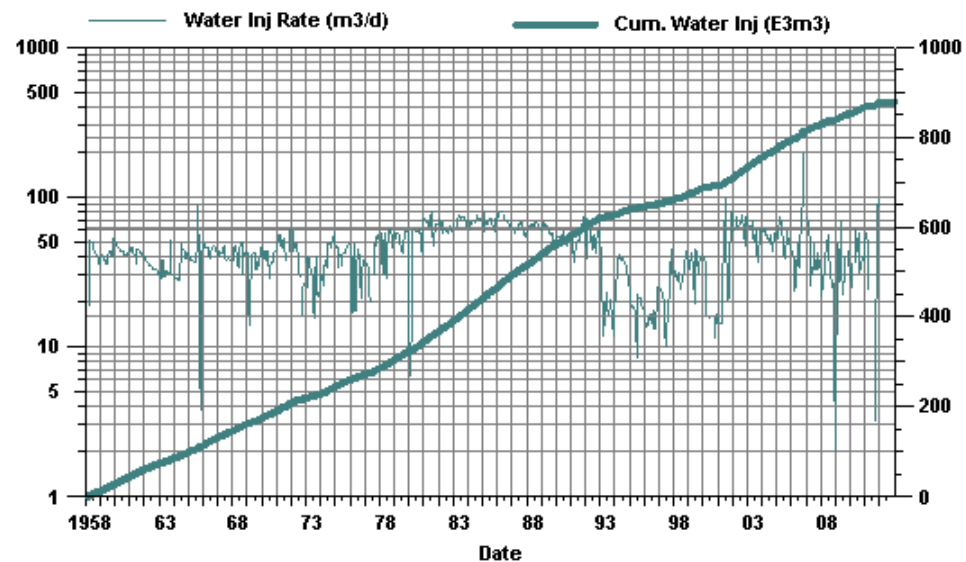
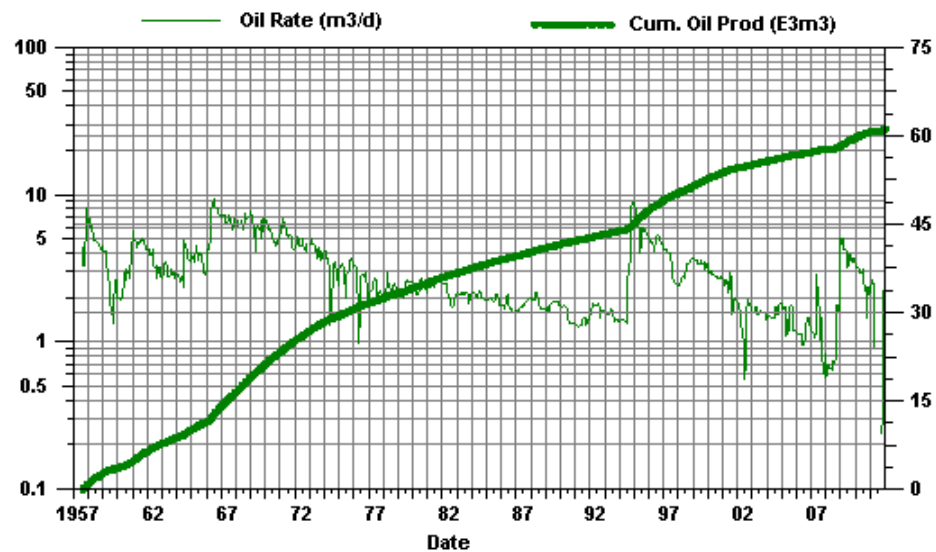
Viriden Roselea Unit #1

PAT 05-25



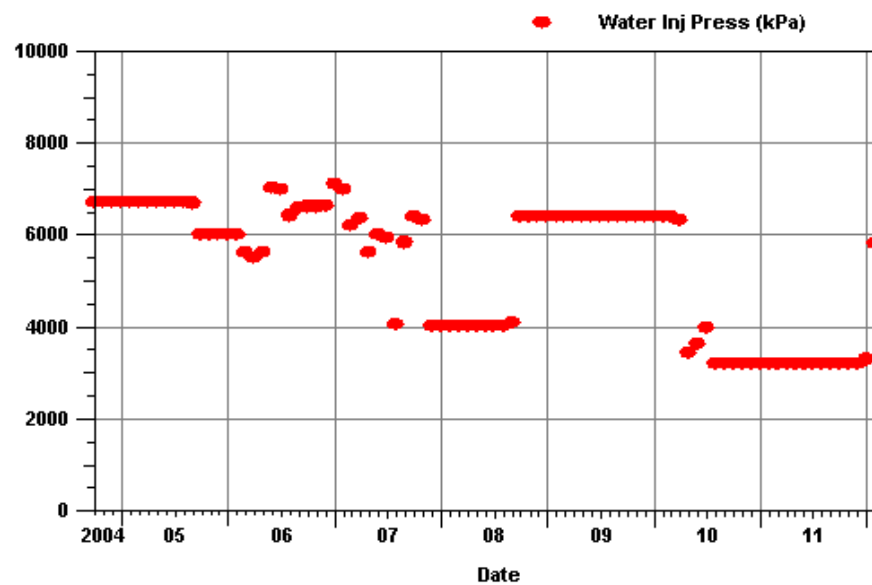
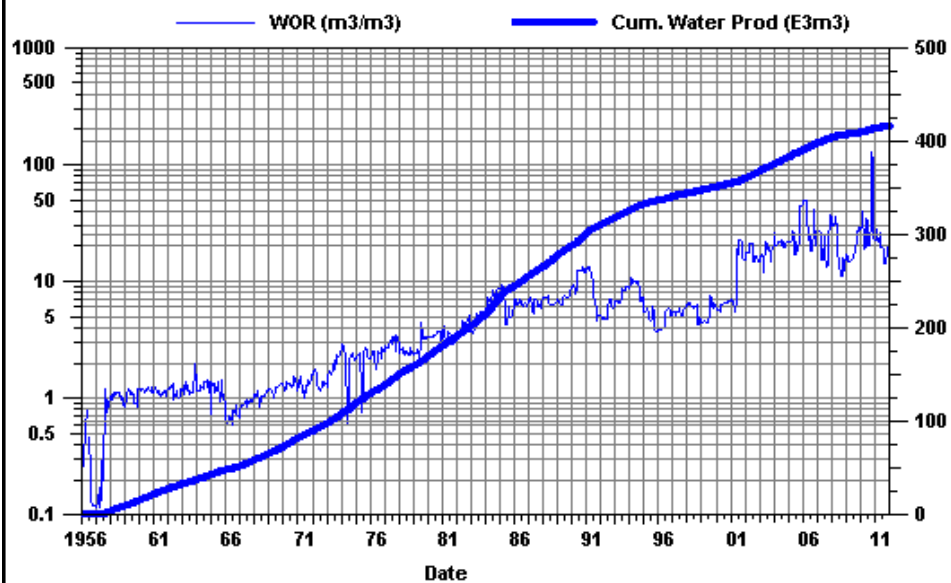
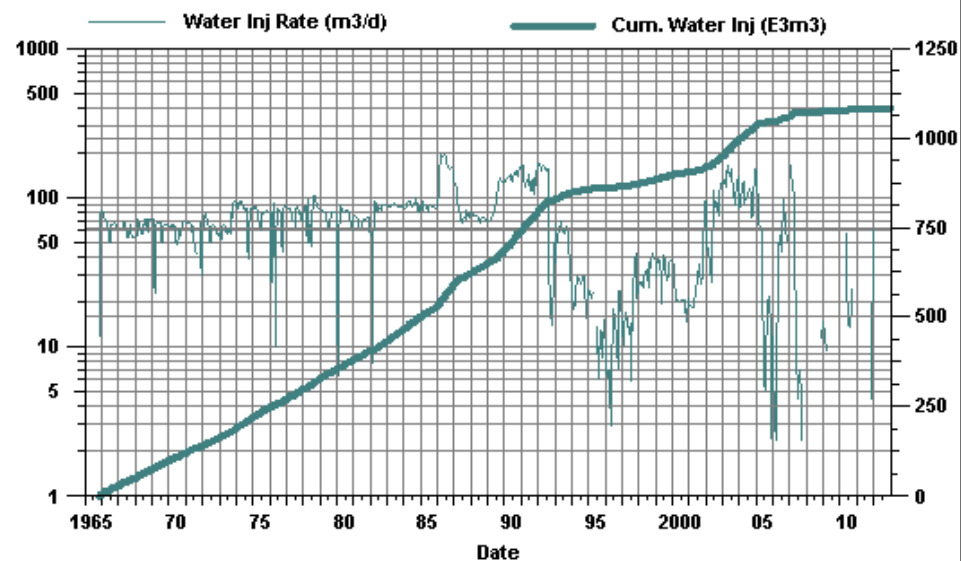
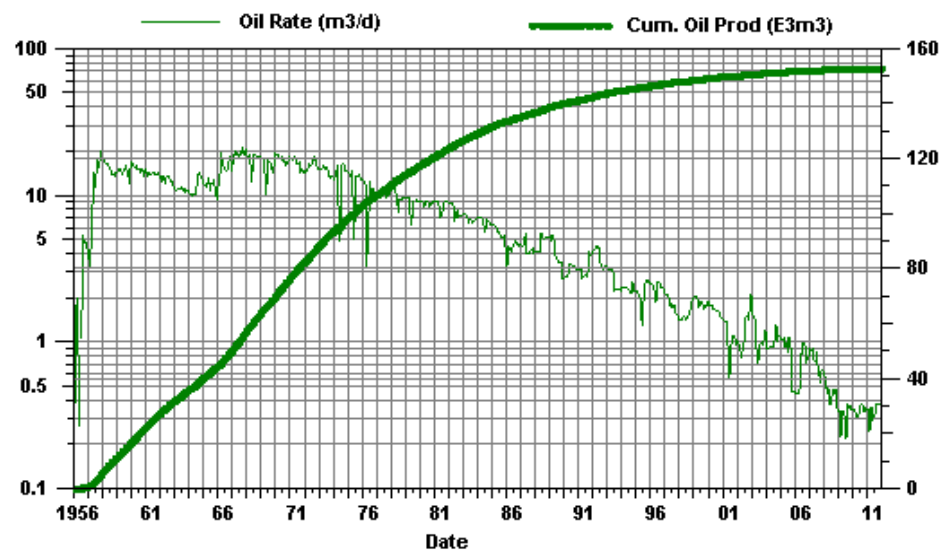
Virden Roselea Unit #1

PAT 05-28



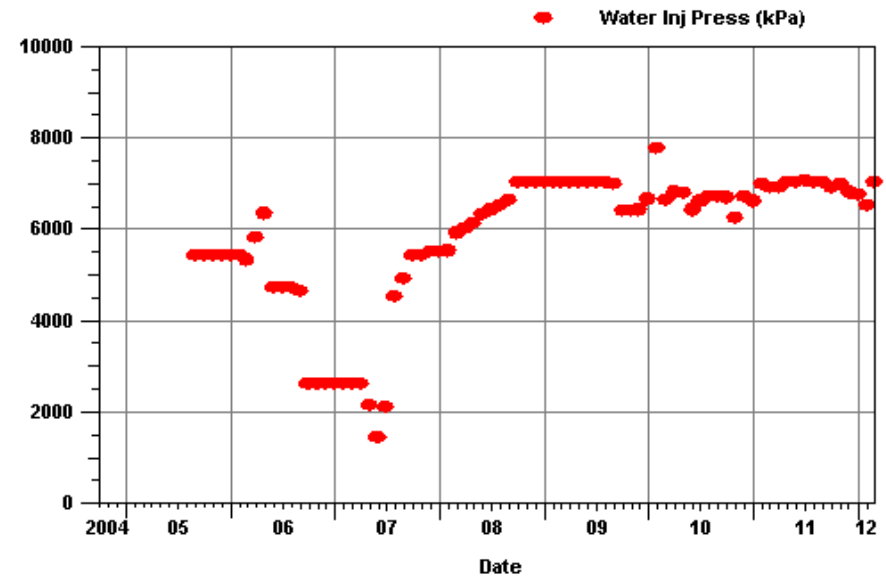
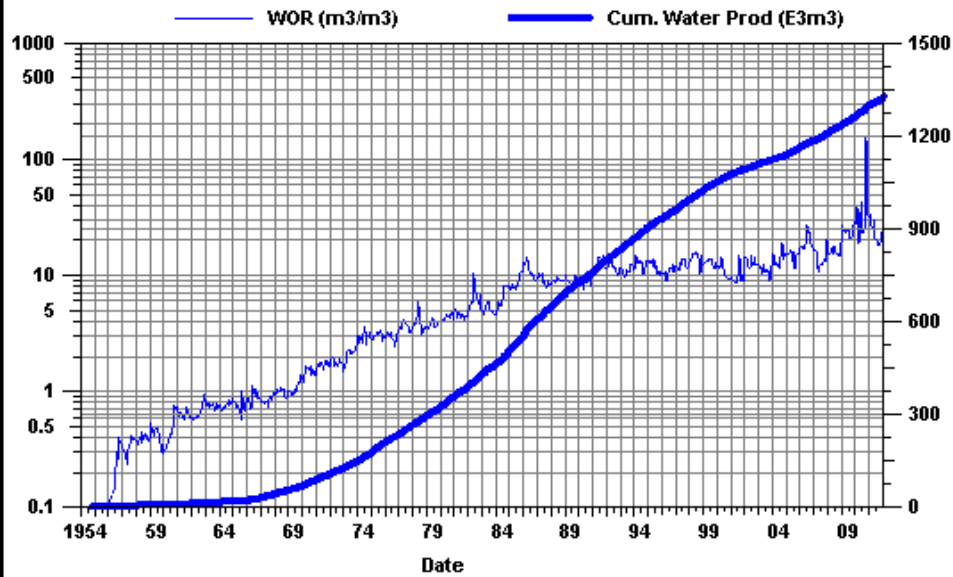
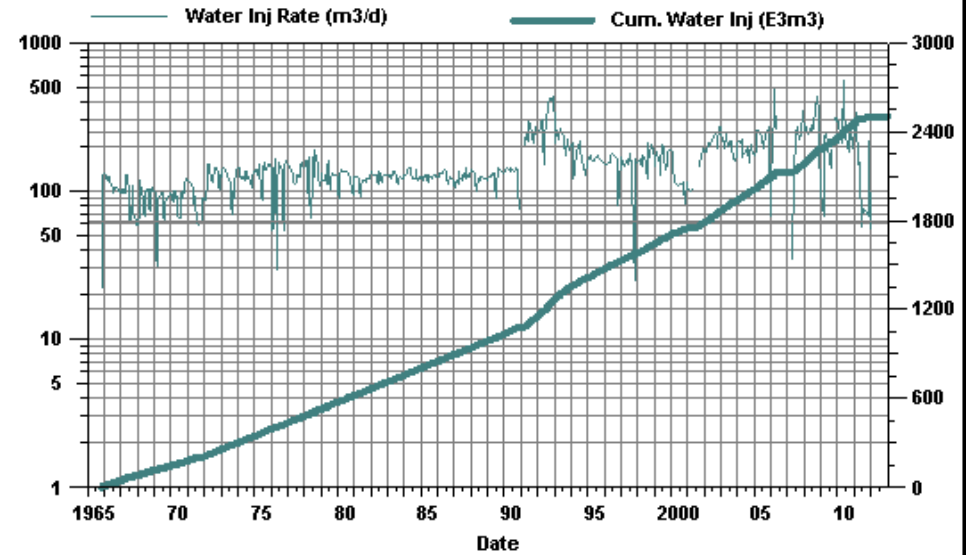
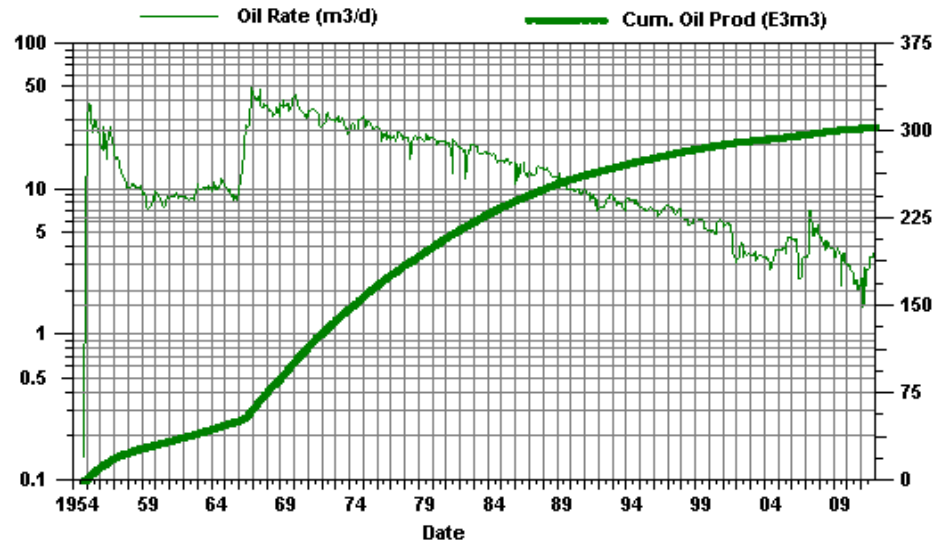
Viriden Roselea Unit #1

PAT 05-29



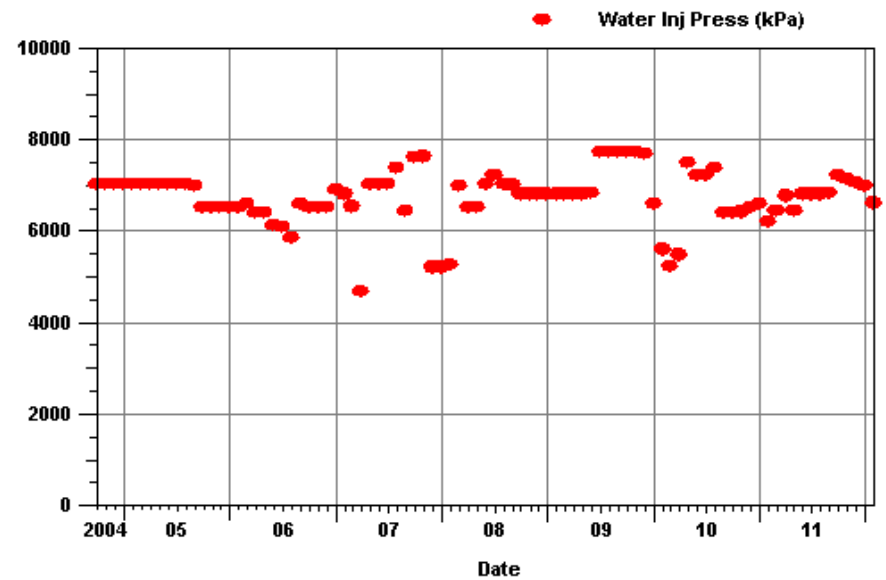
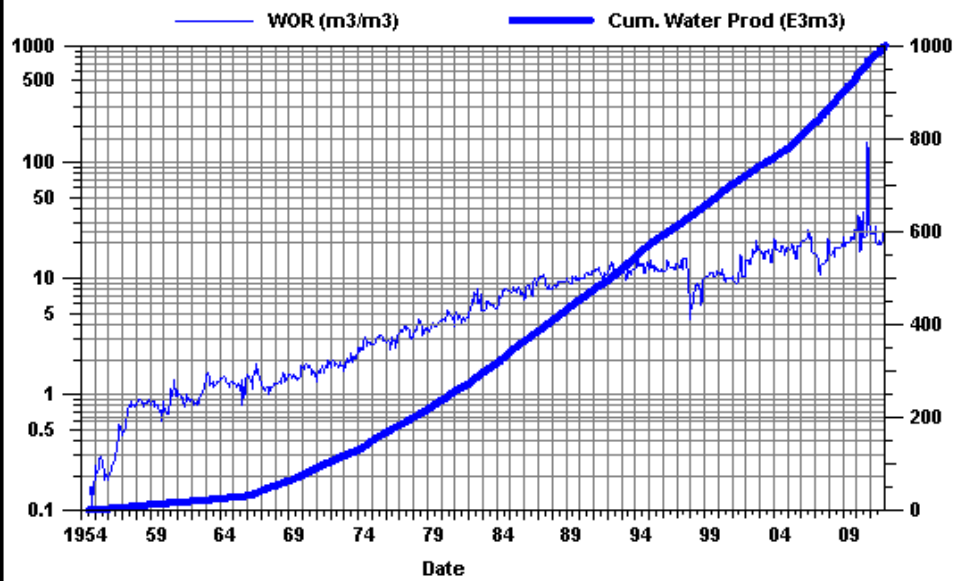
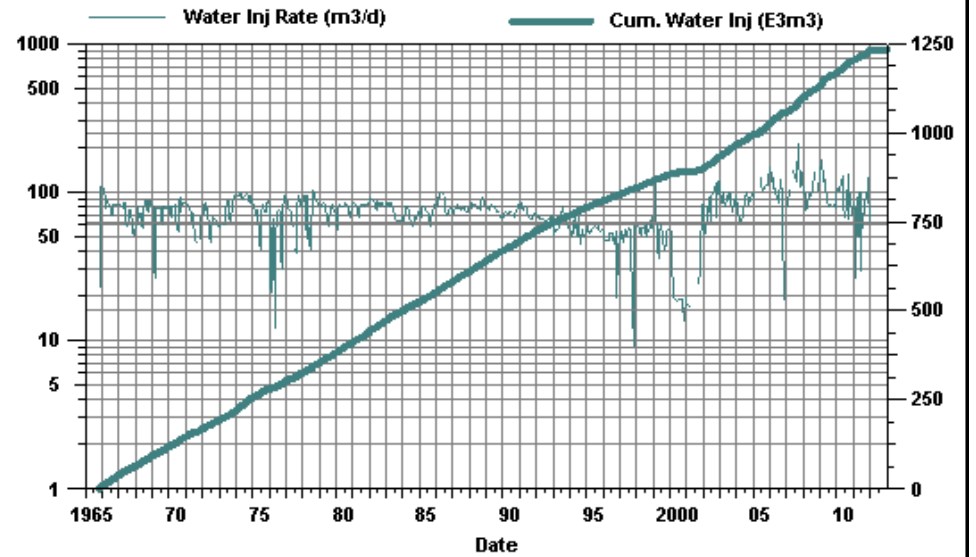
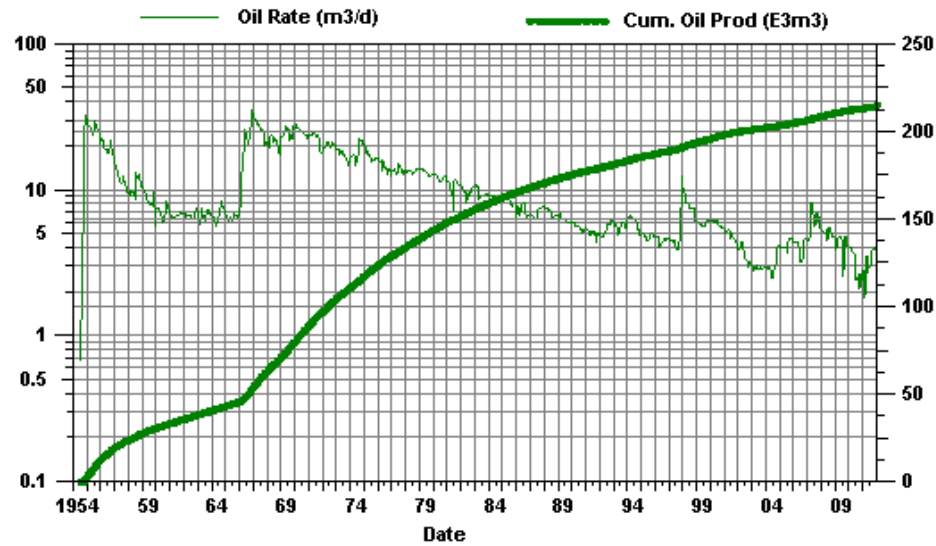
Virden Roselea Unit #1

Pat 05-30



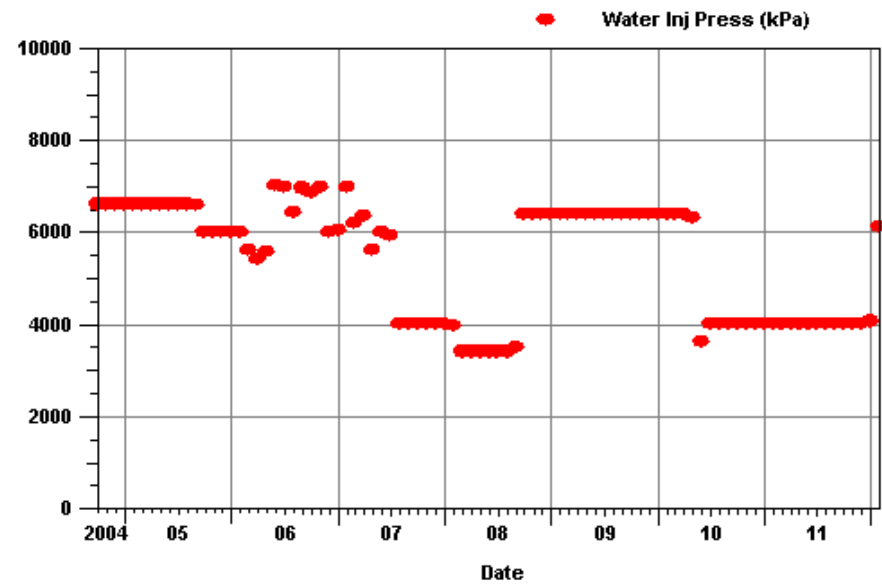
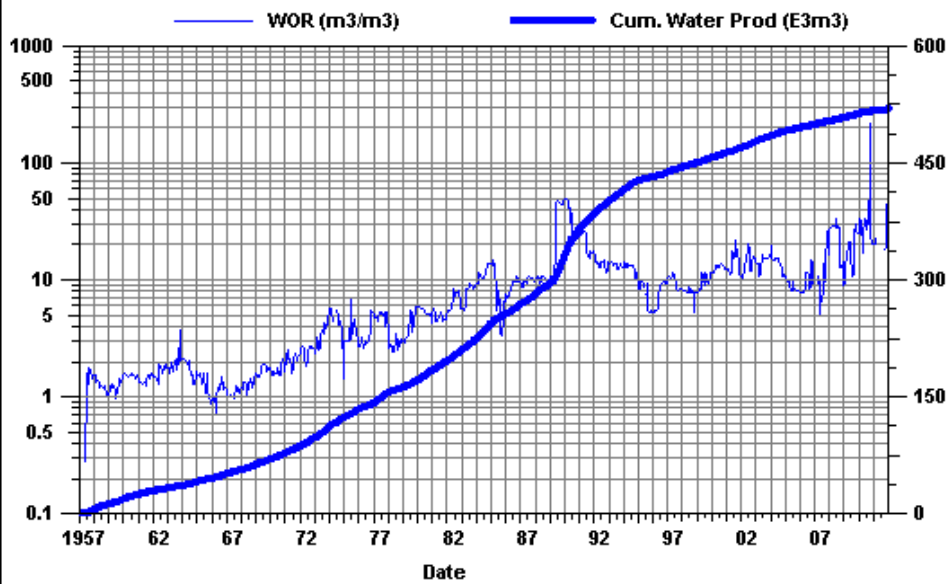
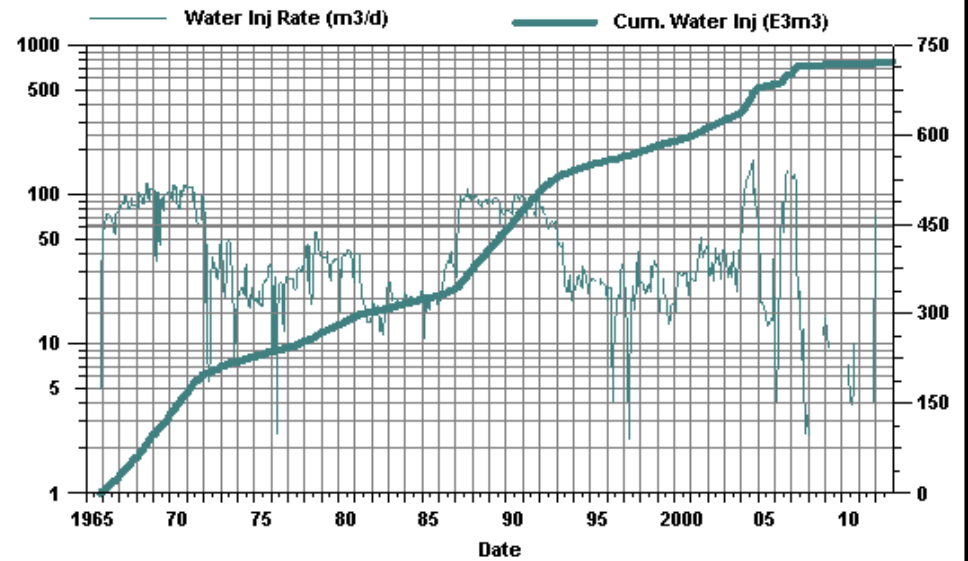
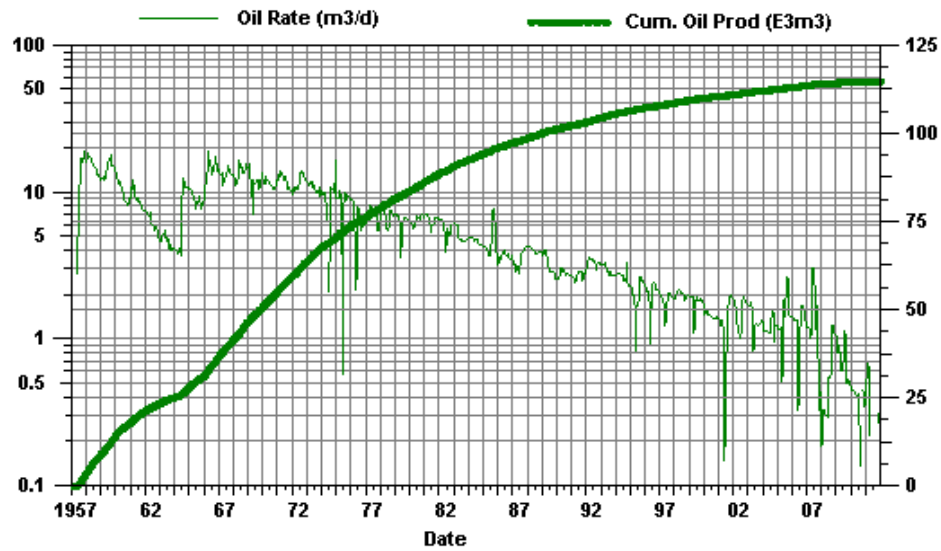
Viriden Roselea Unit #1

PAT 07-25



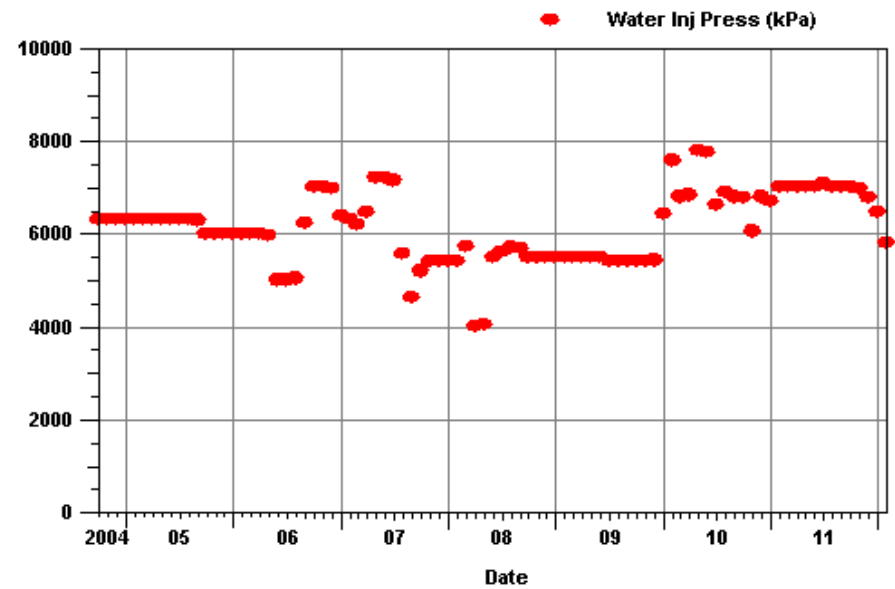
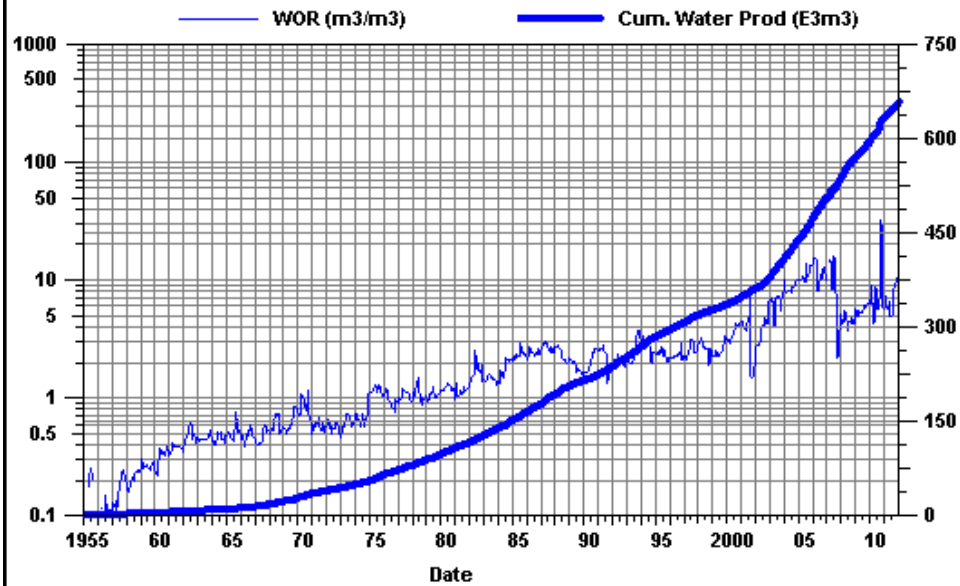
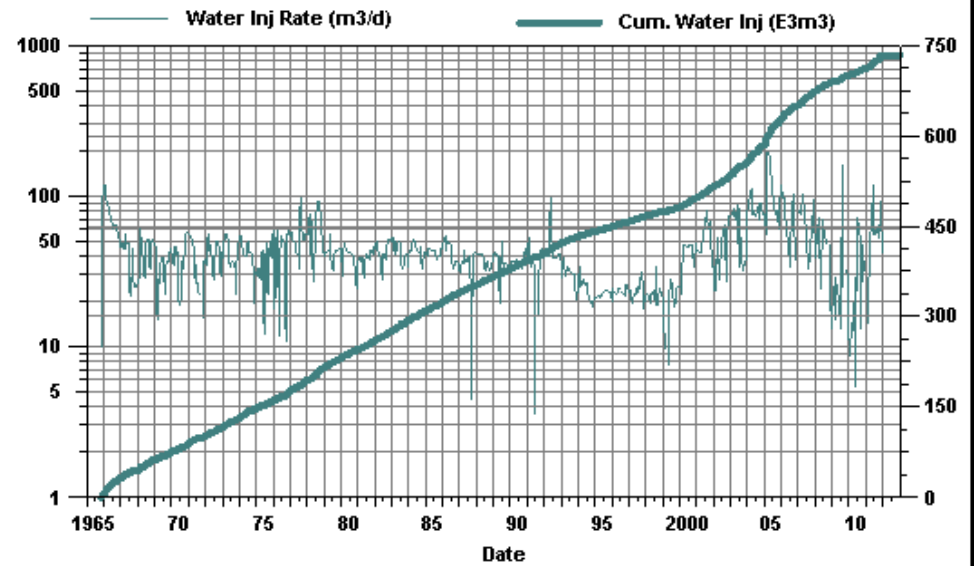
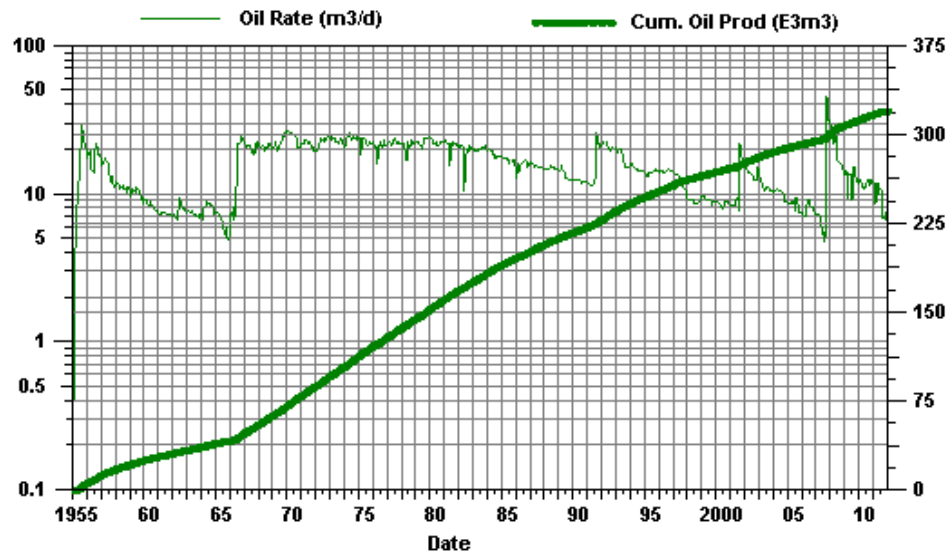
Viriden Roselea Unit #1

PAT 07-29



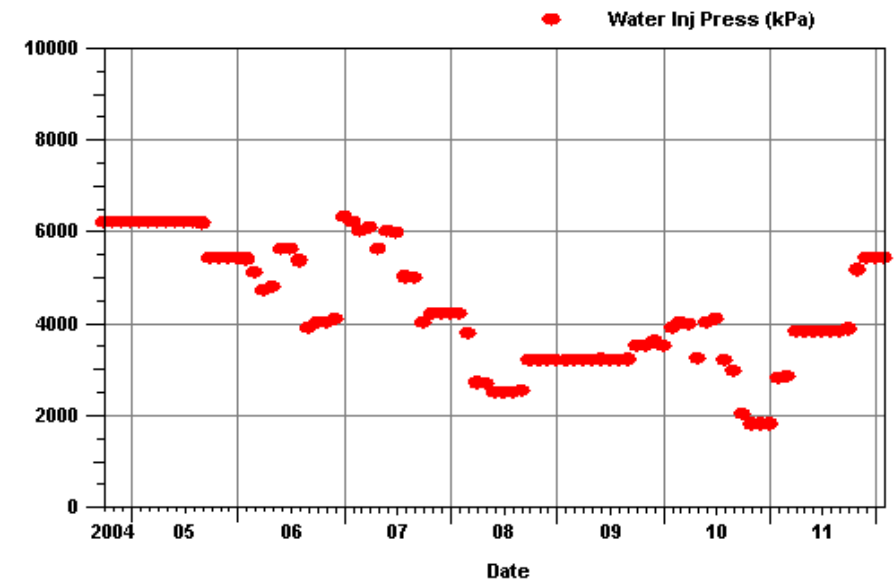
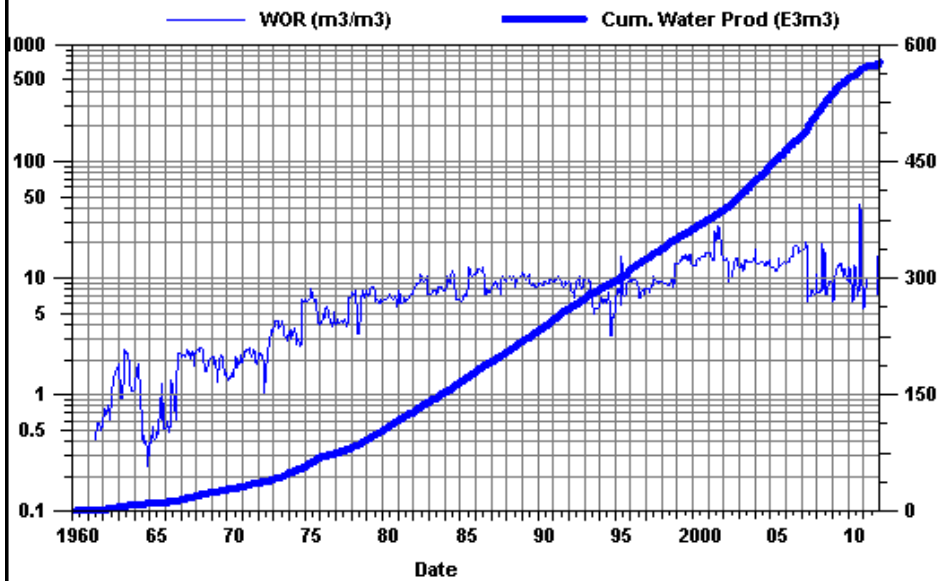
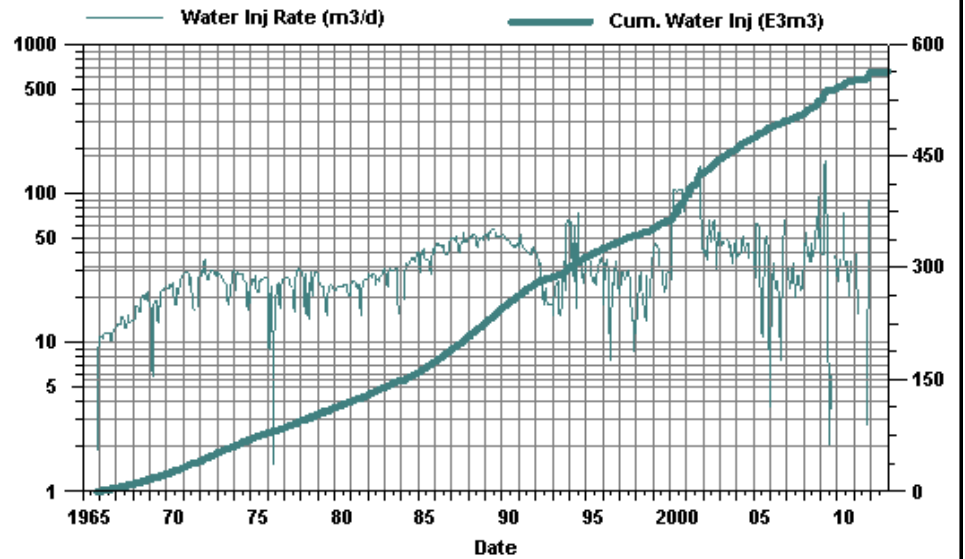
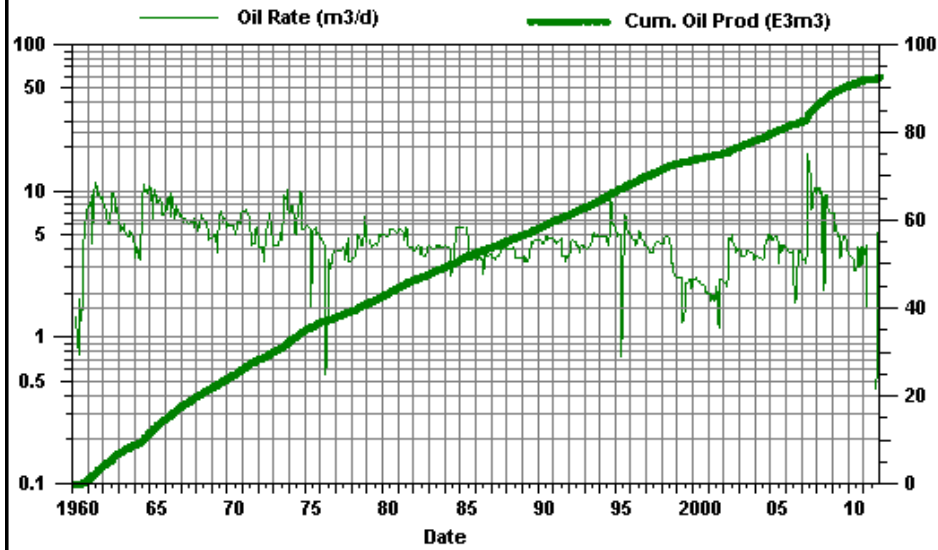
Viriden Roselea Unit #1

PAt 07-30



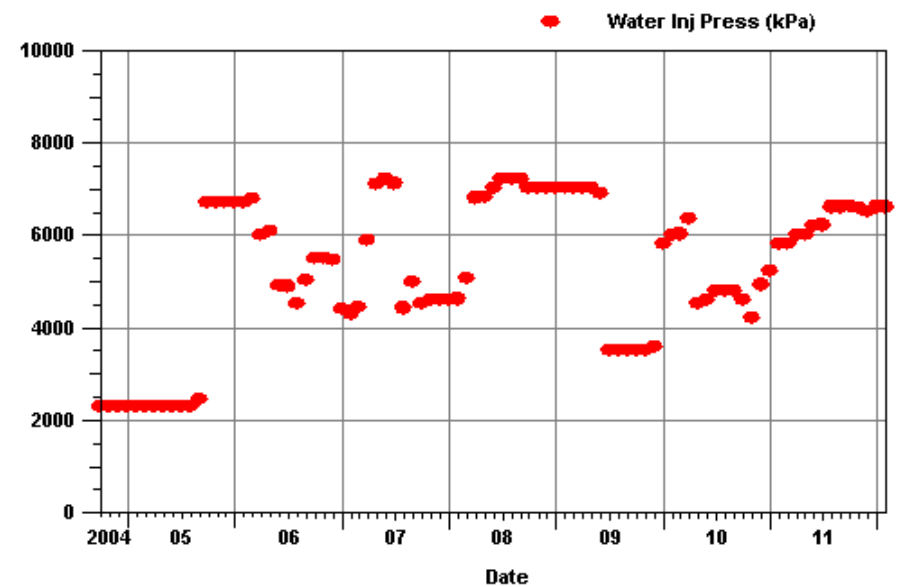
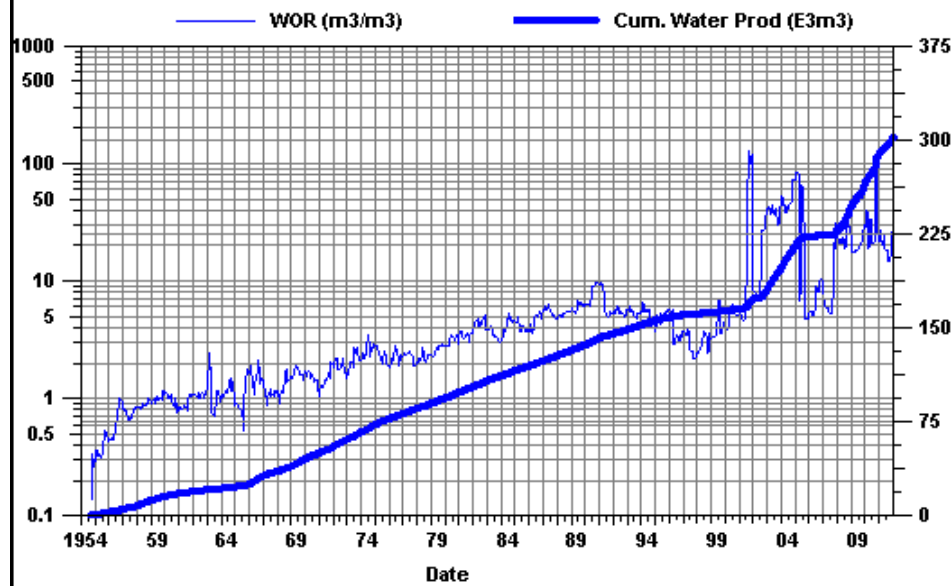
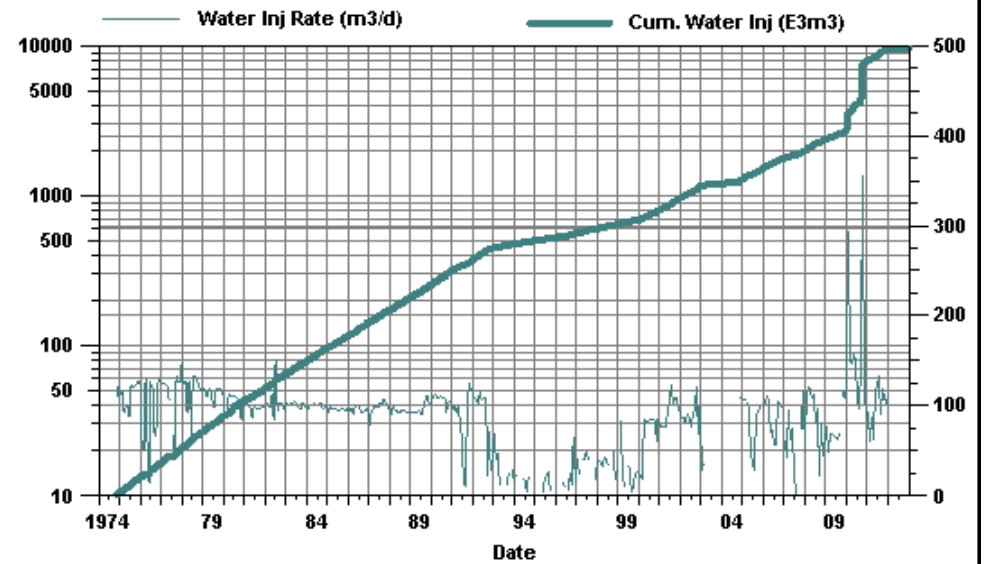
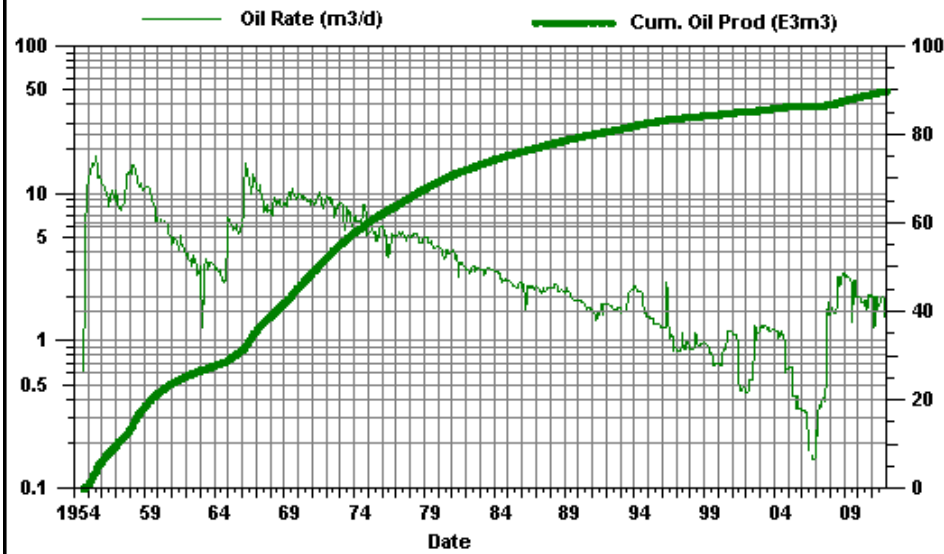
Viriden Roselea Unit #1

PAT 11-21



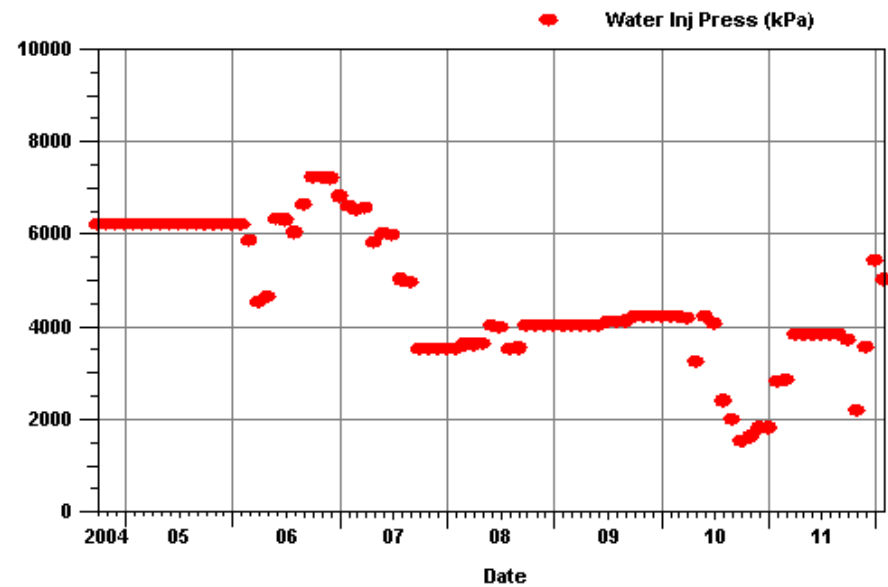
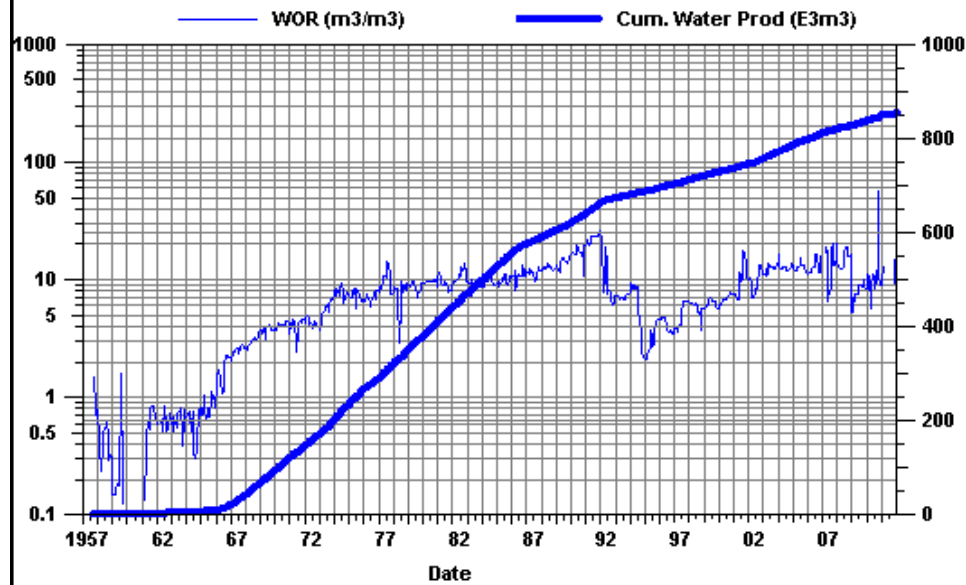
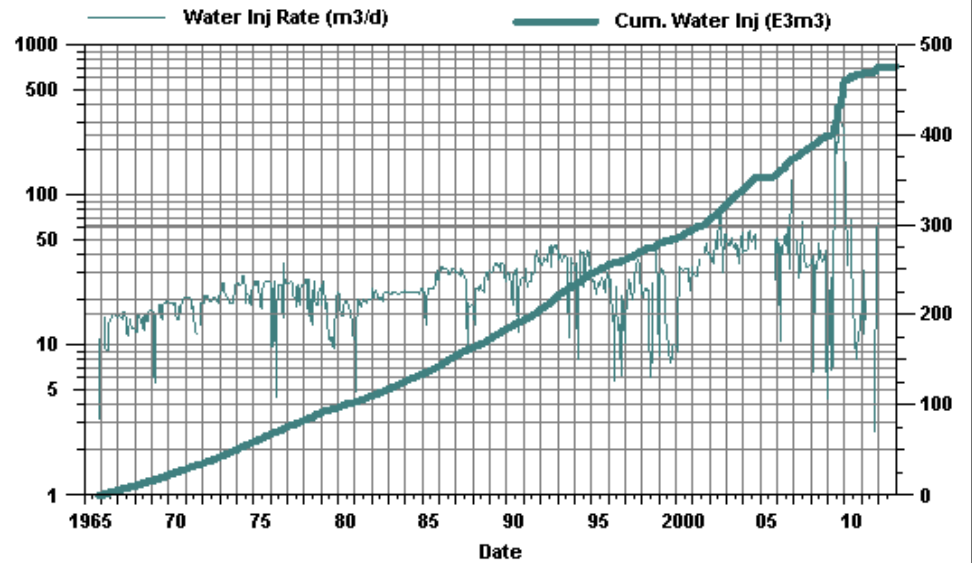
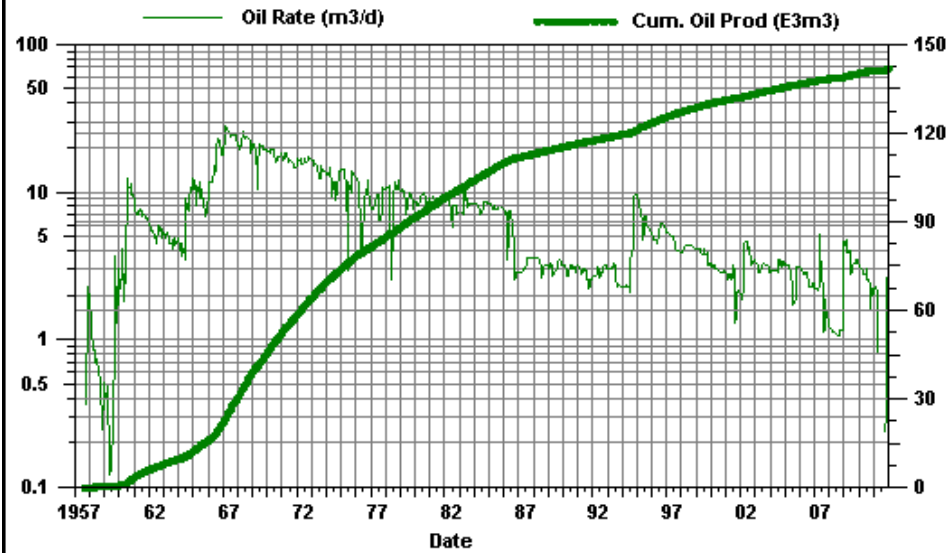
Viriden Roselea Unit #1

PAT 11-25



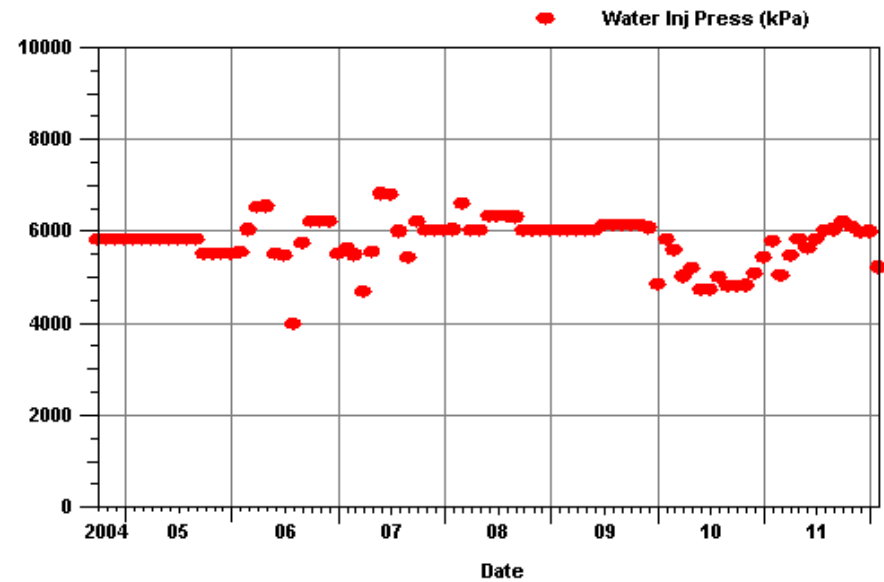
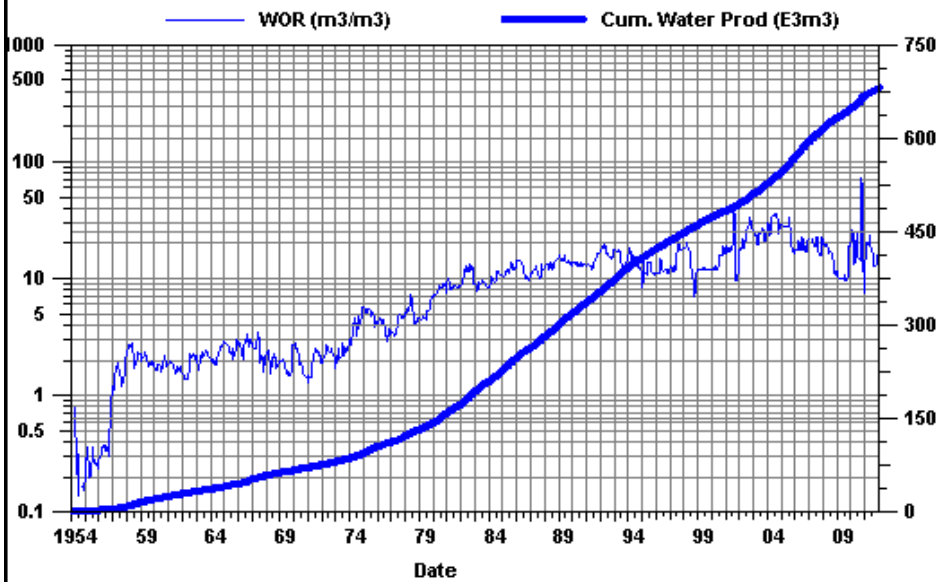
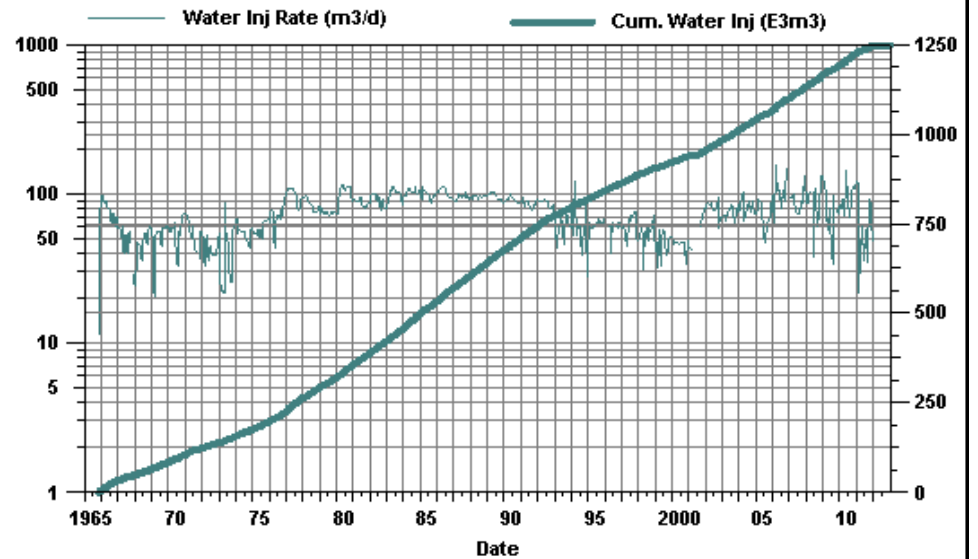
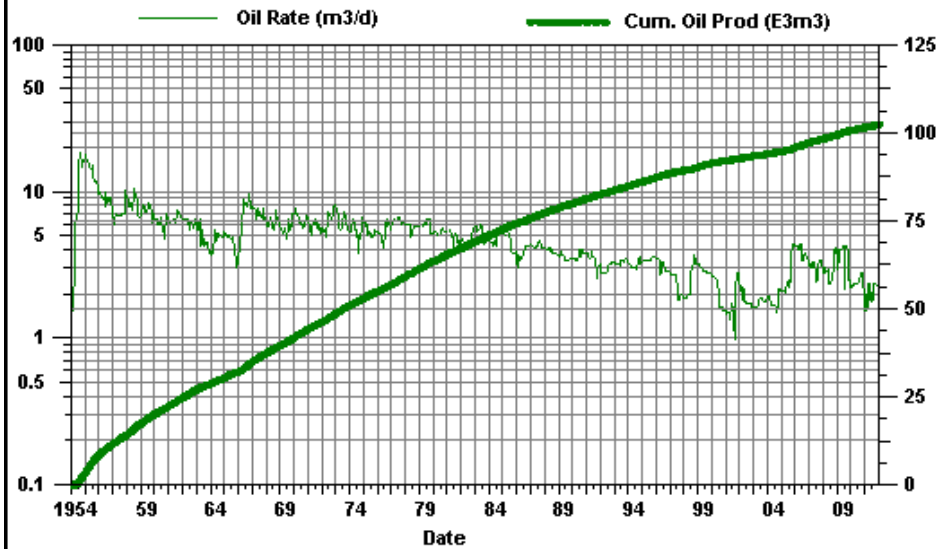
Viriden Roselea Unit #1

PAT 13-21



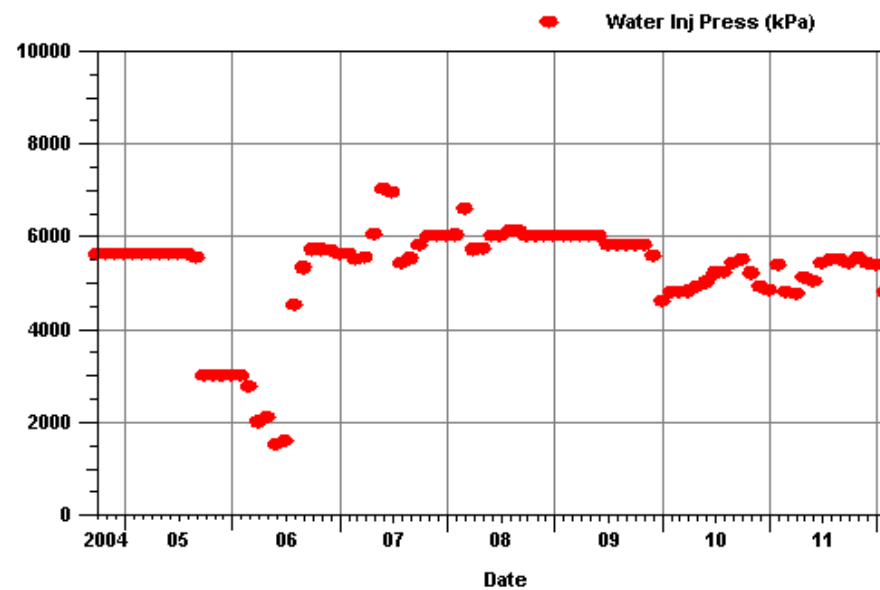
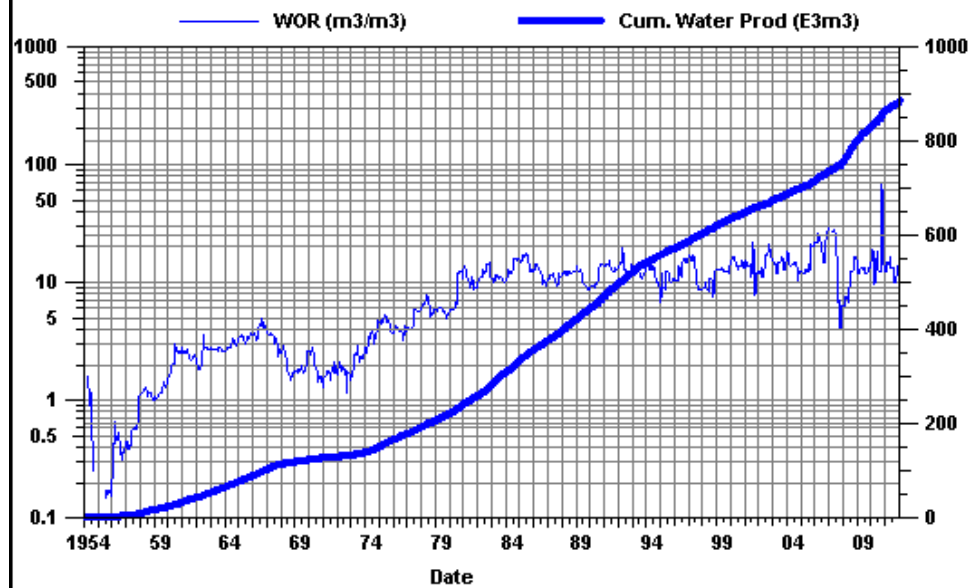
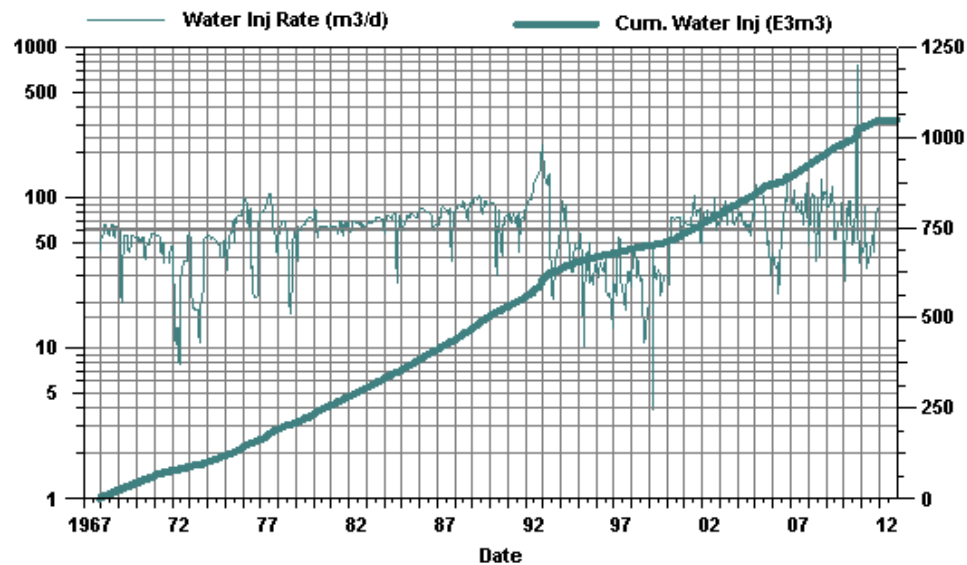
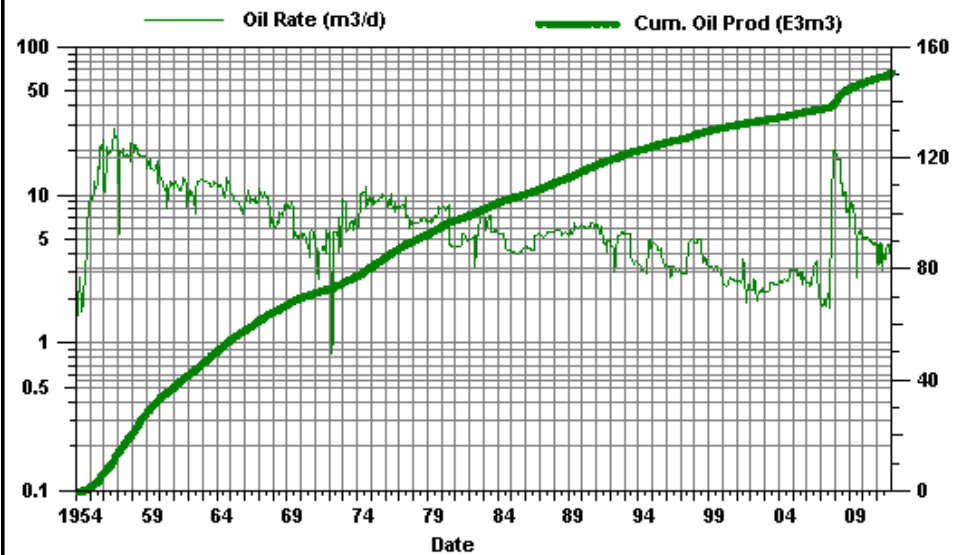
Virden Roselea Unit #1

PAT 13-24



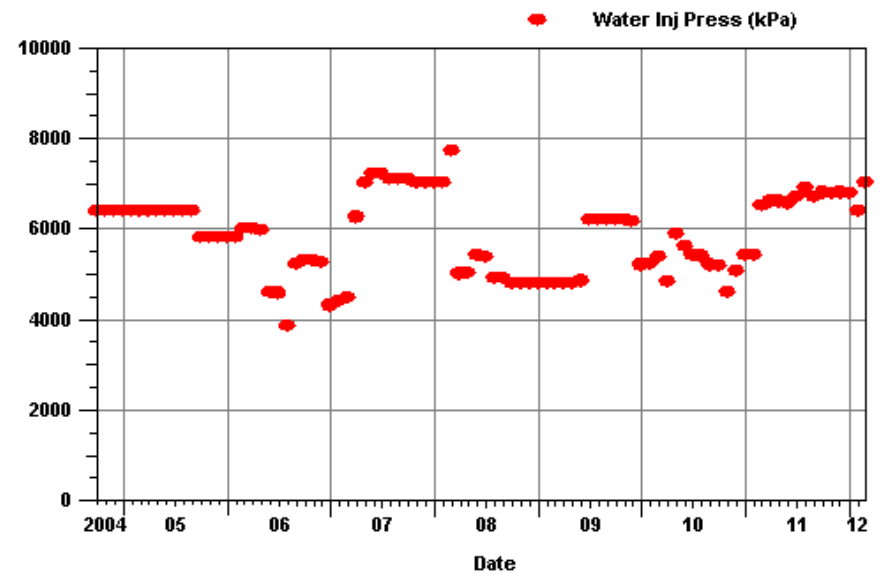
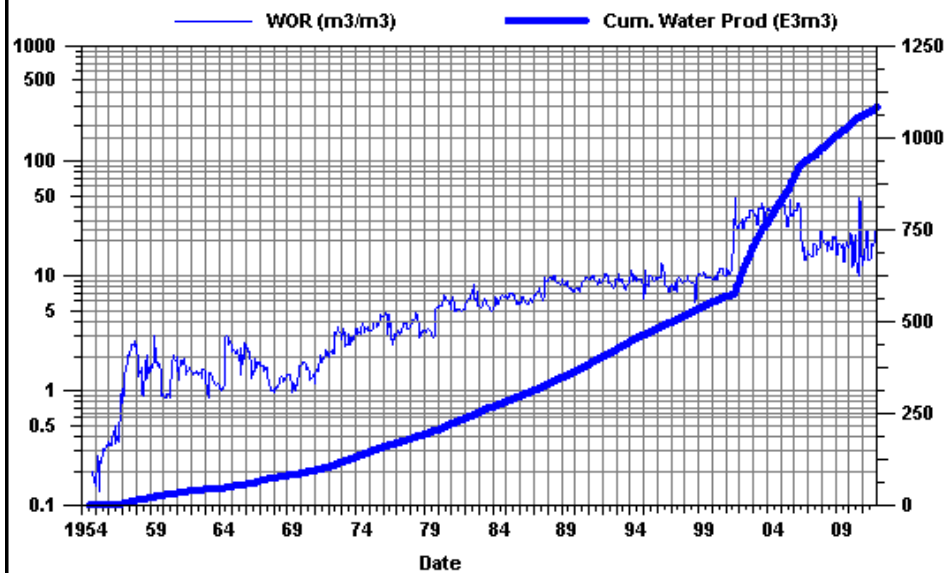
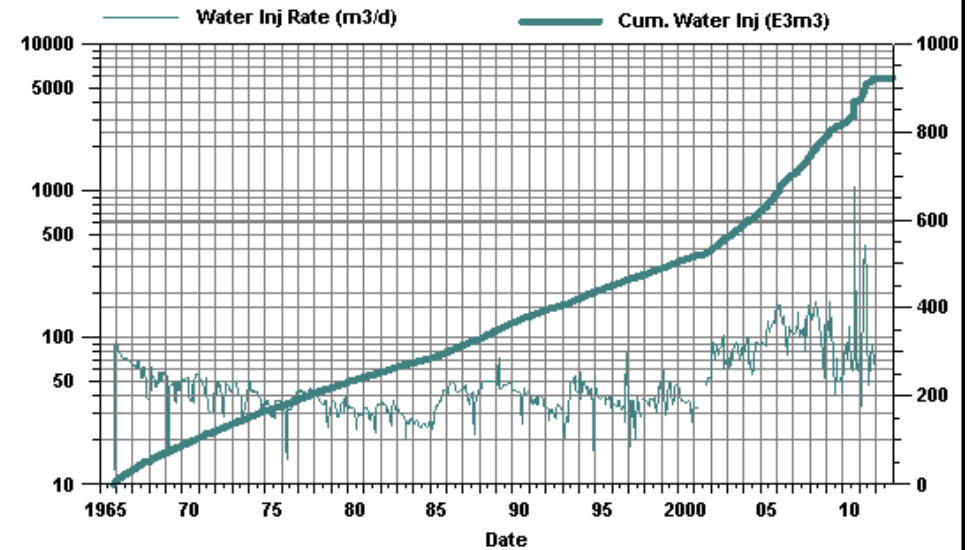
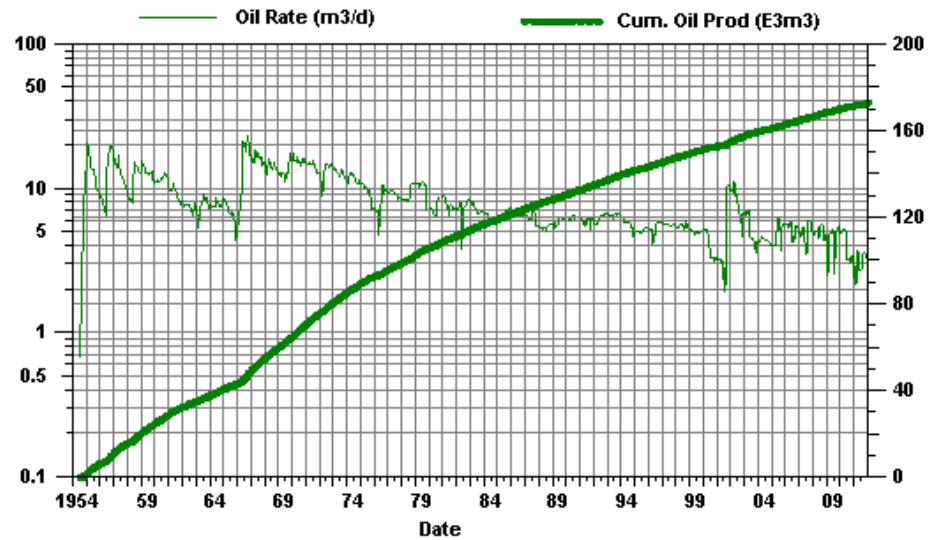
Viriden Roselea Unit #1

PAT 15-23



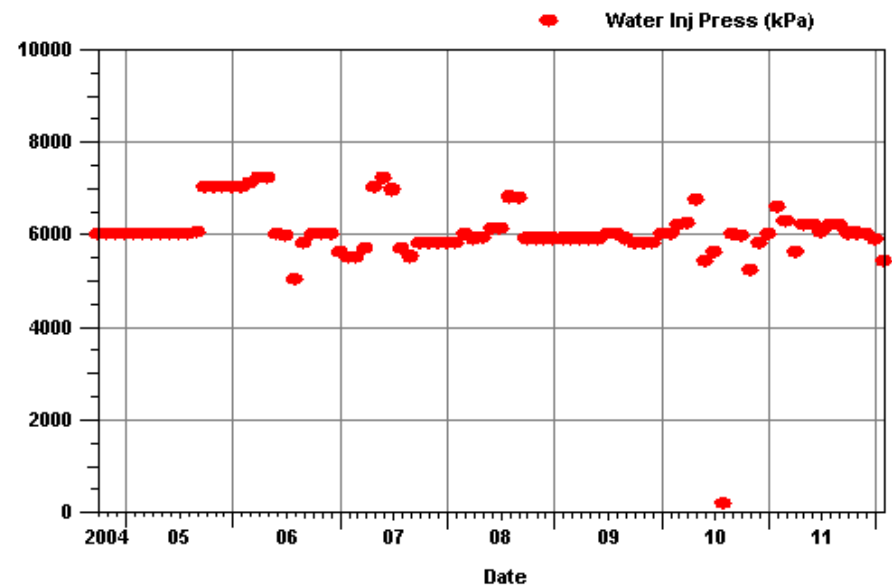
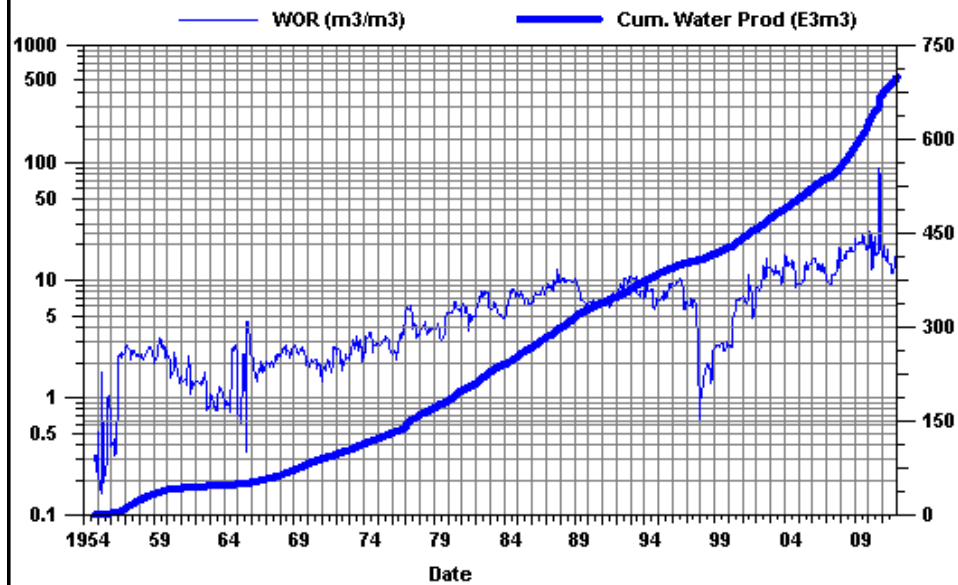
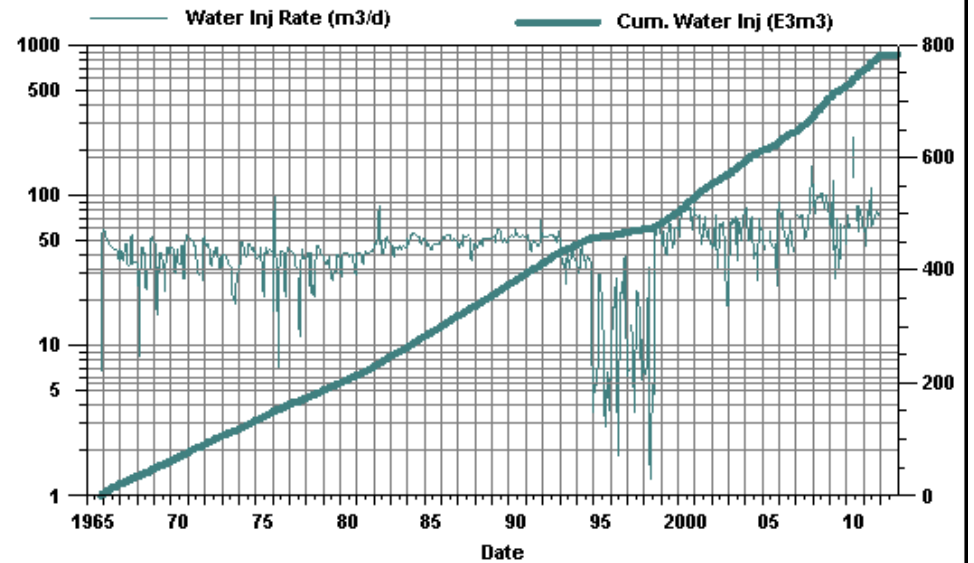
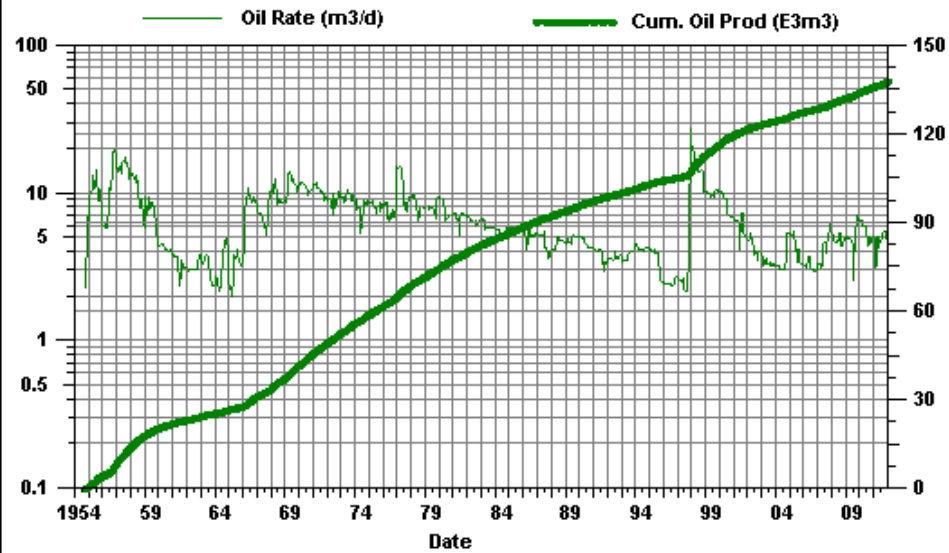
Virden Roselea Unit #1

PAT 15-24



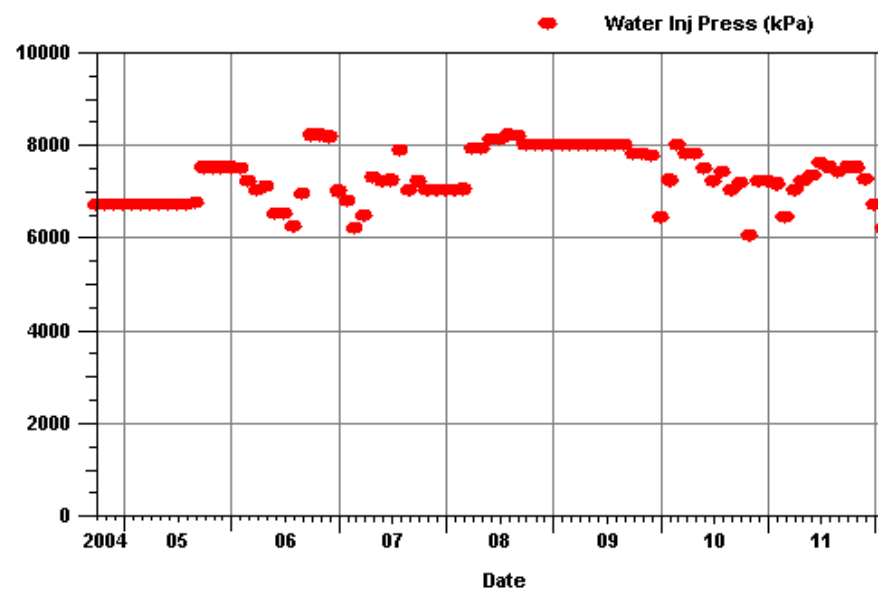
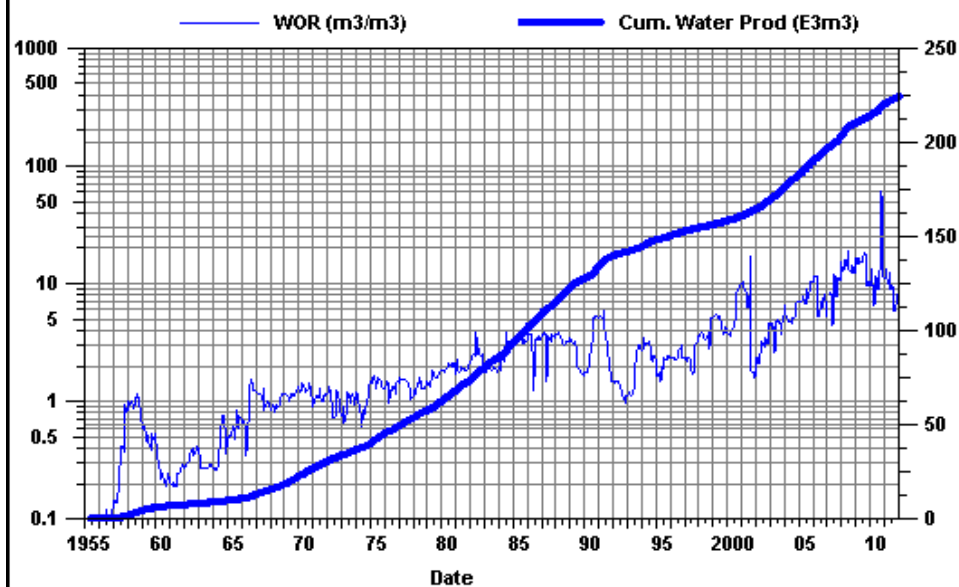
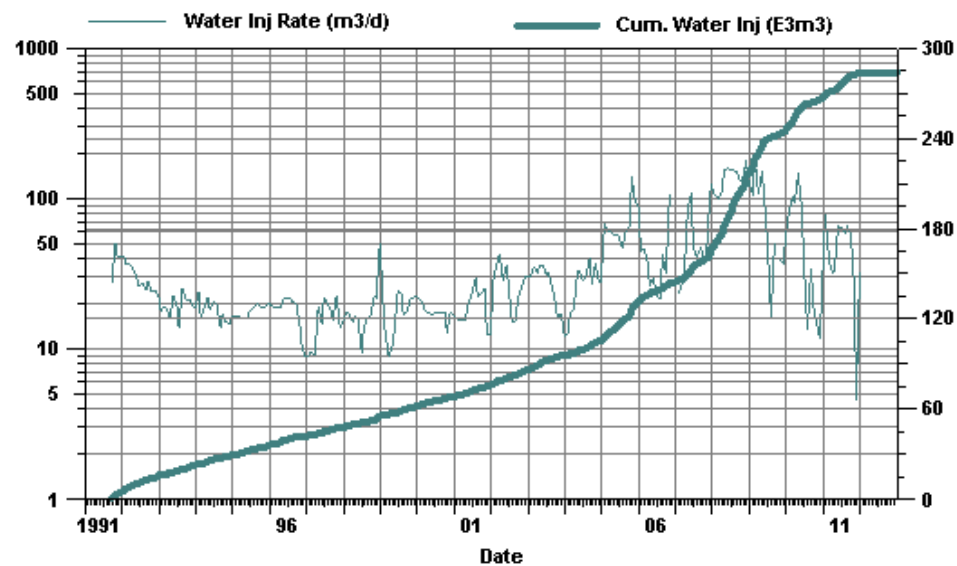
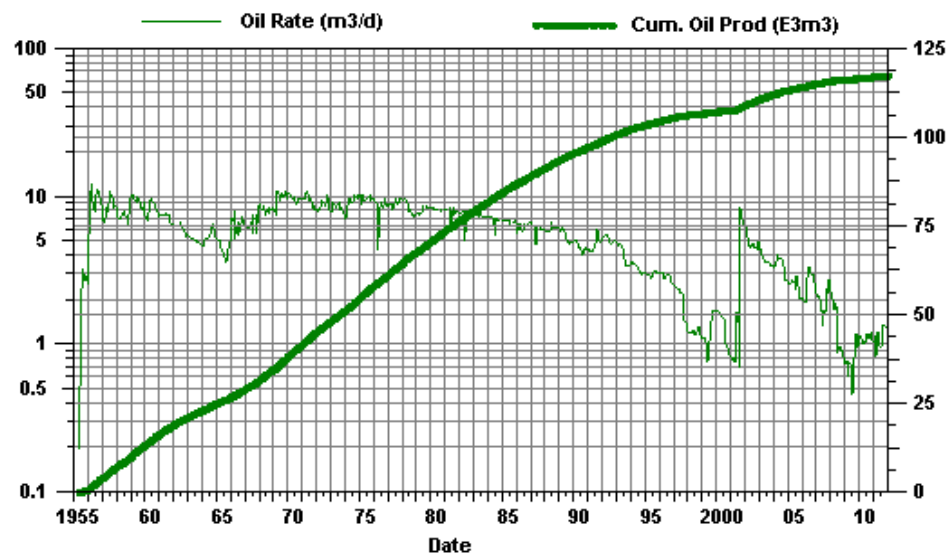
Virden Roselea Unit #1

Pat 15-25



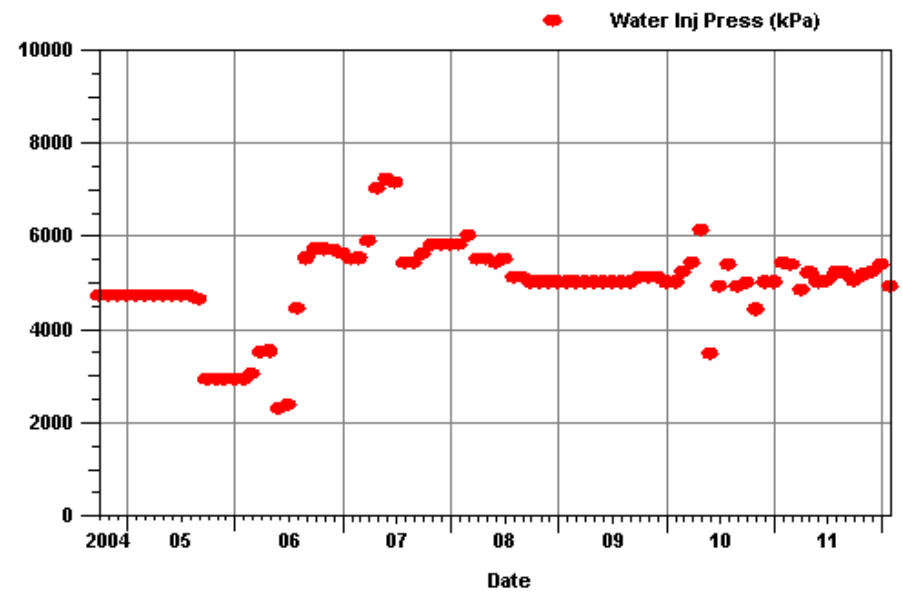
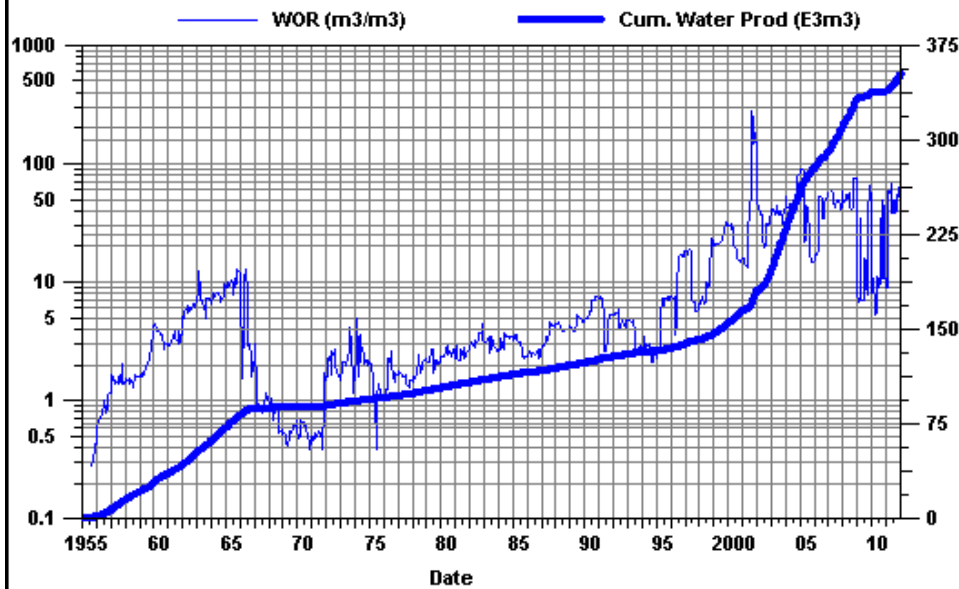
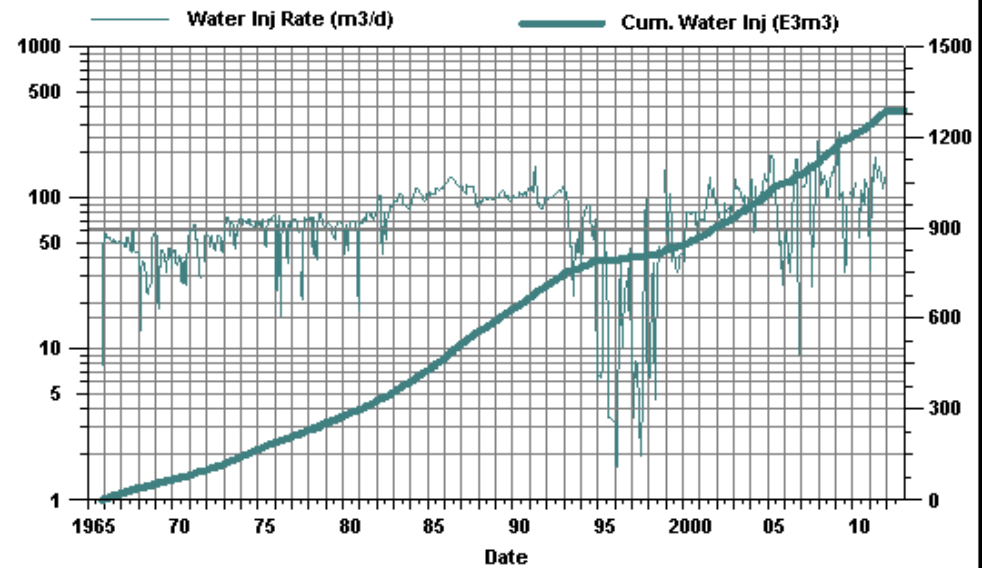
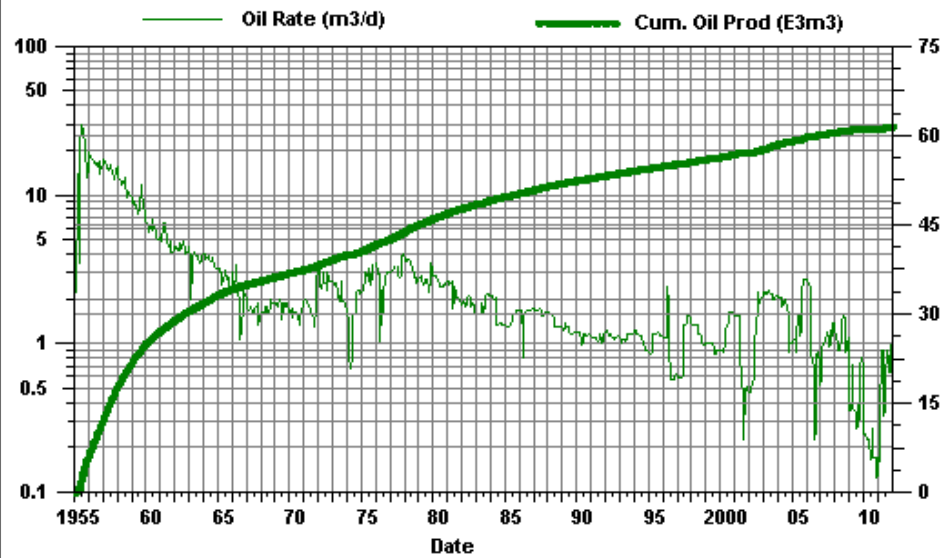
Virden Roselea Unit #1

PAT 09-30



Viriden Roselea Unit #1

PAT 13-25



Viriden Roselea Unit #1

PAT 15-30

